

LIBRARY 2.0 STORAGE SPECIFICATION

Types of units:

- Build-Up Bookcase
 - Single sided and double-sided stationary starter bookcase
 - Single sided and double-sided stationary adder bookcase
 - Single sided and double-sided end of run panel
 - Light blocking vertical filler with top or vertical filler only
- Assembled Bookcase
 - Single sided and double-sided stationary bookcase
 - Double sided moveable bookcase
 - Double sided split shelf moveable bookcase
 - Curved Shelf open mobile shelving (*See Designer 2.0 specification sheet*)
- Desking solutions (*See Transaction Desk specification sheet*)
 - Modular units that connect in the field
 - Workstations – tables and transaction counters in straight and curved versions
 - Cabinets – fixed at worksurface height and mobile to slide under worksurface
 - Book returns
- Book display solutions
 - Mobile book trucks
 - Mobile book browsers
- Carrels – stand-alone, starter and adders (*See Carrel specification sheet*)
- Mobile pedestals: with drawers, shelves and/or trays (*See Designer 2.0 Mobile Pedestal specification sheet.*)
- Presentation carts (*See Designer 2.0 Presentation Cart specification sheet*)
- Tables (*See Table specification sheets*)
 - Full End Panel tables in multiple heights (*See Full End Panel and Carrel specification sheet*)
 - Picnic Table and Bench (*See Picnic Table and Bench specification sheet*)
 - Multi-shape group tables with metal leg supports in multiple heights (*See Post Leg, I-Leg, Flip & Nest or Unitized Frame specification sheets*)
 - Rectangle desks (*See Unitized Frame specification sheet*)

Standard features on Build-Up Bookcases:

- Starter and adder units shipped ready to assemble (RTA) with appropriate camlock locations on all panels.
 - Starter units have one end panel on the left side. Top extends on the right to accept the adjacent adder or end of run panel.
 - Adder units have one end panel with shelf holes running through end panel. The top is inset on the left to accept the adjacent starter unit top.
 - All starter or adder units have 4”H adjustable levelers.
 - All starter and adder units have adjustable shelves. After positioning, the middle shelf on the first and last bookcase in the run must be secured in place to prevent bowing.
 - All shelving runs start with one starter unit with unlimited adder units lengthening the shelving run. End-of-run panel is used to complete a shelving run.
 - Fillers may be used to conceal gaps between shelving run and an adjacent wall(s) or between adjoining bookcases in a corner, T or X application.

- Starter and adder shelving units are joined together in the field with camlocks. Top assembly attaches to ends and back with camlocks.
- Shelves attached with metal shelf clips.
- .75" thick 45lb. multi-density particleboard substrate with a balanced construction of color-matched, thermally fused laminate (TFL) on both sides on end panels, backs, base assembly, bottom assembly, and most shelves. Permanently attached 1mm color-matched or coordinating PVC edge band bonded with hot-melt adhesive and trimmed flush on all visible edges non-user touch-point edges.
- Worksurfaces and tops have 1" thick 45lb. density particleboard substrate and feature balanced construction of color-matched, thermally fused laminate (TFL). Permanently attached 3mm and 1mm color-matched or coordinating PVC edge band bonded with hot-melt adhesive and trimmed flush on all user touch-point edges.
- Adjustable shelf options include laminate, metal, or display. Shelf placement holes on 32mm increments allow for shelf repositioning in the field.
 - Laminate - .75" thick 45lb. multi-density particleboard substrate with a balanced construction of color-matched, thermally fused laminate (TFL) on both sides with attached 1mm color-matched PVC edgeband. Shelves are secured with metal shelf pins designed to prevent accidental dislodgement.
 - Metal - 20-gauge powder-coated rolled steel shelves.
 - Display – 20-gauge powder-coated rolled steel with book rest stop
- Base assembly features camlock-dowel construction structure to form a toe kick.
- Bottom shelves have 1" thick 45lb. density particleboard substrate and feature balanced construction of color-matched, thermally fused laminate (TFL) with 1mm color-matched edge band bonded with hot-melt adhesive and trimmed flush. Bottom shelves have secure press-fit rubber bumper connection to base assembly to allow easy access to levelers.
- Top assembly includes metal support reveal constructed from
- Adjustable levelers, 4" high, are located at the inside corners and accessible from inside by removing the bottom assembly top.
- Units can be repositioned over their lifetime as desired.
- The top, bottom shelf, and base subassemblies are constructed at the factory. End panels, intermediate panels, backs/partitions, and shelves installed on-site.

Standard features of Assembled Bookcase:

- .75" thick 45lb. multi-density particleboard substrate with a balanced construction of color-matched, thermally fused laminate (TFL) on both sides on end panels, backs, base assembly, bottom assembly, and most shelves. Permanently attached 1mm color-matched or coordinating PVC edge band bonded with hot-melt adhesive and trimmed flush on all visible edges non-user touch-point edges.
- Worksurfaces for bookcases 48" high and shorter have 1" thick 45lb. density particleboard substrate and feature balanced construction with high pressure laminate (HPL) on top and .5mm cabinet liner backer on bottom of worksurface. Permanently attached 3mm and 1mm color-matched or coordinating PVC edge band bonded with hot-melt adhesive and trimmed flush on all user touch-point edges.
- Tops for bookcases 60" high and taller have 1" thick 45lb. density particleboard substrate and feature balanced construction of color-matched, thermally fused laminate (TFL). Permanently attached 3mm and 1mm color-matched or coordinating PVC edge band bonded with hot-melt adhesive and trimmed flush on all user touch-point edges.
- Adjustable shelf options include laminate, metal, or display. Shelf placement holes on 32mm increments allow for shelf repositioning in the field.
 - Laminate - .75" thick 45lb. multi-density particleboard substrate with a balanced construction of color-matched, thermally fused laminate (TFL) on both sides with attached 1mm color-matched PVC edgeband. Shelves are secured with metal shelf pins designed to prevent accidental dislodgement.
 - Metal - 20-gauge powder-coated rolled steel shelves.

- Display – 20-gauge powder-coated rolled steel with book rest stop
- Base assembly features camlock-dowel construction structure to form a toe kick.
- Bottom shelves have 1" thick 45lb. density particleboard substrate and feature balanced construction of color-matched, thermally fused laminate (TFL) with 1mm color-matched edge band bonded with hot-melt adhesive and trimmed flush. Bottom shelves have secure press-fit rubber bumper connection to base assembly to allow easy access to levelers.
- Top assembly includes metal support reveal constructed from
- Adjustable levelers, 4" high, are located at the inside corners and accessible from inside by removing the bottom assembly top.
- Units can be repositioned over their lifetime as desired.
- Bookcases are fully assembled at the factory. All shelves are installed at the factory prior to shipment.

Standard features of Assembled Moveable Bookcase(includes split shelf bookcase):

- .75" thick 45lb. multi-density particleboard substrate with a balanced construction of color-matched, thermally fused laminate (TFL) on both sides on end panels, backs, base assembly, bottom assembly, and most shelves. Permanently attached 1mm color-matched or coordinating PVC edge band bonded with hot-melt adhesive and trimmed flush on all visible edges non-user touch-point edges.
- Worksurfaces for bookcases 48" high and shorter have 1" thick 45lb. density particleboard substrate and feature balanced construction with high pressure laminate (HPL) on top and .5mm cabinet liner backer on bottom of worksurface. Permanently attached 3mm and 1mm color-matched or coordinating PVC edge band bonded with hot-melt adhesive and trimmed flush on all user touch-point edges.
- Tops for bookcases 60" high and taller have 1" thick 45lb. density particleboard substrate and feature balanced construction of color-matched, thermally fused laminate (TFL). Permanently attached 3mm and 1mm color-matched or coordinating PVC edge band bonded with hot-melt adhesive and trimmed flush on all user touch-point edges.
- Adjustable shelf options include laminate, metal, or display. Shelf placement holes on 32mm increments allow for shelf repositioning in the field.
 - Laminate - .75" thick 45lb. multi-density particleboard substrate with a balanced construction of color-matched, thermally fused laminate (TFL) on both sides with attached 1mm color-matched PVC edgeband. Shelves are secured with metal shelf pins designed to prevent accidental dislodgement.
 - Metal - 20-gauge powder-coated rolled steel shelves.
 - Display – 20-gauge powder-coated rolled steel with book rest stop
- Base assembly features camlock-dowel construction structure to form a toe kick.
- Bottom shelves have 1" thick 45lb. density particleboard substrate and feature balanced construction of color-matched, thermally fused laminate (TFL) with 1mm color-matched edge band bonded with hot-melt adhesive and trimmed flush. Bottom shelves have secure press-fit rubber bumper connection to base assembly to allow easy access to levelers.
- Top assembly includes metal support reveal constructed from
- Concealed 2" non-locking casters are attached using 5/16-9 x 5/8" lag bolts to a false bottom.
- Units can be repositioned over their lifetime as desired.
- Bookcases are fully assembled at the factory. All shelves are installed prior to shipment.

Standard features on book truck/browser units:

- .75" and 1" thick 45lb. multi-density particleboard substrate with a balanced construction of color-matched, thermally fused laminate (TFL) on both sides of all horizontal and vertical outer and internal panels.
- Permanently attached 3mm color-matched or coordinating PVC edge band with ergonomic 1/8" radiused edge bonded with hot-melt adhesive and trimmed flush on top, bottom, and sides of all visible user touch-point edges to create pry-resistant edges and structural integrity.
- Mobile book trucks feature plate-mounted 100mm diameter casters with twin wheel swivel with non-marking thermoplastic elastomer tread for quiet use on hard or carpeted flooring. Nylon casters tested to hold 225 pounds each (900 pounds for 4 casters) and roll over uneven surfaces. All casters are equipped with a brake. Cabinets secured to casters with four 5/16x1" Hex head lag bolt per caster.
- Mobile browsers feature plate-mounted 75mm diameter casters with twin wheel swivel with non-marking thermoplastic elastomer tread for quiet use on hard or carpeted flooring. Casters tested to hold 225 pounds each (900 pounds for 4 casters) and roll over uneven surfaces. All casters are equipped with a brake. Cabinets secured to plate-mounted casters with 5/16-1" Hex head log bolts.
- Shipped assembled with casters attached.

Optional features:

- Additional shelves
- Space planning guidelines
- Wrench for levelers

Surface materials palette:

- Thermally Fused Laminate (TFL) is available in woodgrains, solids, or patterns. 31 standard colors with coordinating edgeband colors.
- Custom TFL and HPL through specials request process with coordinating 3mm vinyl edgeband.
- Buying relationships established with Wilsonart, Formica, Nevamar, Pionite/Panolam, and other suppliers.

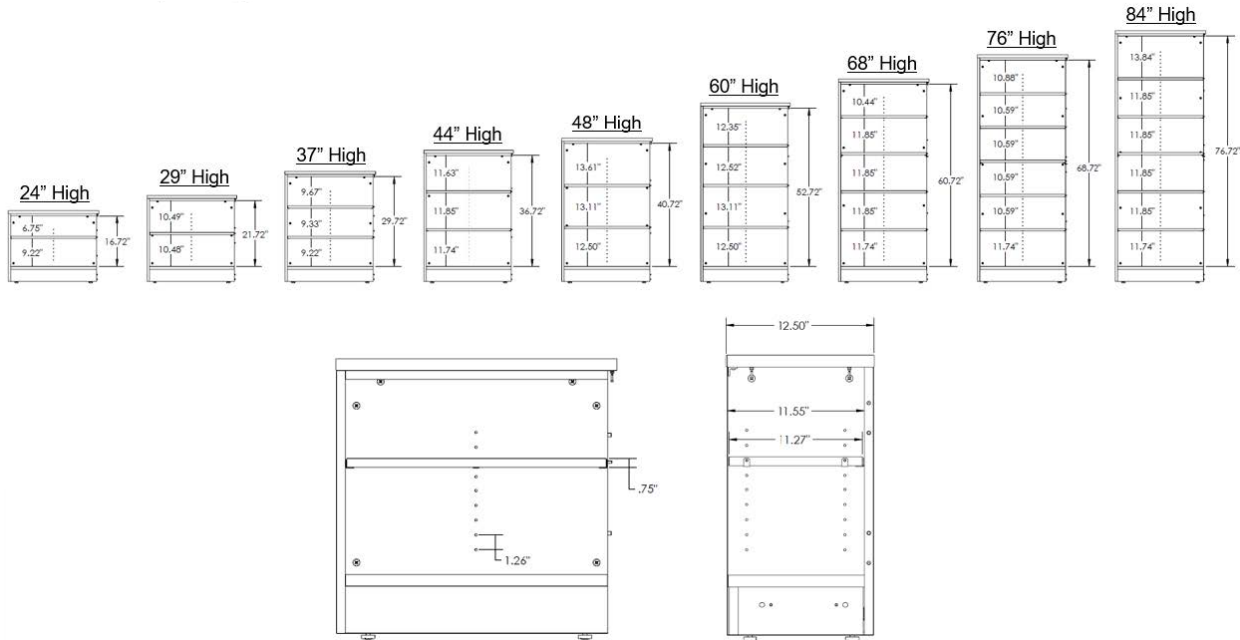
Overall:

- Cloth blanket wrapped and carton packaging options are available. If cartoned, skids are made from recycled materials.

Warranty highlights:

- Fleetwood brand products carry a limited lifetime warranty, where products are warranted to be free of defects in materials and workmanship for the life of the product.
- Normal wear-and-tear is not covered under the warranty. Unauthorized alterations, improper maintenance, or abuse nulls warranty.
- Fleetwood will repair or replace free-of-charge any component that fails under normal use or provide refund or credit.
- Laminates, casters, levelers, and flip-and-nest mechanisms have a 12-year warranty.
- Some products have limited life coverage of 3 or 5 years. See full warranty statement for details.
- Consumables, natural variations in product, and select non-standard products not covered under limited lifetime warranty.
- See full warranty statement for details.

Build-up and Assembled Bookcase shelf spacing guidelines:



Understanding Shelf Capacity:

When calculating the number of books for different bookcase heights:

1. Include the number of shelves called out in the price list chart
2. Add one (1) additional shelf for the bookcase bottom panel, which acts as a shelf.

So, if (1) shelf is shown, use two (2) shelves instead in calculations

Book Type	Items per lineal foot	Items per 24" W Bookcase shelf*	Items per 30" W Bookcase shelf*	Items per 36" W Bookcase shelf*
Youth Fiction	10	18	23	28
Youth Notification	11	20	26	31
Picture Book	19	35	45	54
Easy Reader	23	43	54	66
Teen Fiction	11	20	26	31
Teen Notification	11	20	26	31
Adult Fiction	11	20	26	31

* 1.5" subtracted to allow for two 3/4" thick end panels.