

SEATING

E! SEATING

Three shell sizes and a flexing back provide comfortable ergonomic support for all ages and body types. The flexing back provides passive ergonomic support to help keep students attentive. The sturdy design resists blushing at the bend point. Back shell features a patented and award-winning handle with built-in hook to keep backpacks off the floor and improves classroom circulation space for teachers trying to provide personal attention to all students.



STACKER

Stack up to 10 high to maximize storage density.
Seat Heights: 10, 12, 14, 16, 18"
Mobility: Glides



TASK

Mobility and height adjustability for teachers and older students.
Seat Height Range: 14-20"
Mobility: Roll control casters



REVERSE CANTILEVER

Stack up to 6 high; place on top of tables for easy floor cleaning.
Seat Heights: 14, 16, 18"
Mobility: Glides



TASK STOOL

Sit-and-stand flexibility in a mobile, height-adjustable chair.
Seat Height Range: 22-32"
Mobility: Roll control casters



CASTER

Supports agile classrooms.
Seat Height: 18"
Mobility: Roll control casters



STOOL

Ideal for alternating sit and stand postures.
Seat Heights: 26, 30"
Mobility: Glides



ONE CHAIR FOR EVERY BODY.

E! Seating offers a range of size and functional options to meet virtually any K-12 application. Get all the chairs you need for your entire student population from a single source.



THE SHELL

Three shell sizes and a flexing back provide comfortable ergonomic support for all ages and body types. One-piece, no-rib construction eases cleaning and maintenance.



HOOK IN THE HANDLE

Back shell features a handle with built-in hook to keep backpacks off the floor and improve flow as students travel between classes and as teachers navigate from student to student within the classroom.



THE BACK

The flexing back provides passive ergonomic support to help keep students attentive. The sturdy design resists blushing at the bend point.



STACKED AND PACKED

Stacks up to 10 high to facilitate floor cleaning and ease transport.



THE BASE

Leg bases are 1" diameter powder-coated, heavy-gauge steel with a molded-in, metal-to-metal shell connection for exceptional strength and no pinch points. Choose from roll control caster and pivoting glide options.



ROLL CONTROL CASTERS

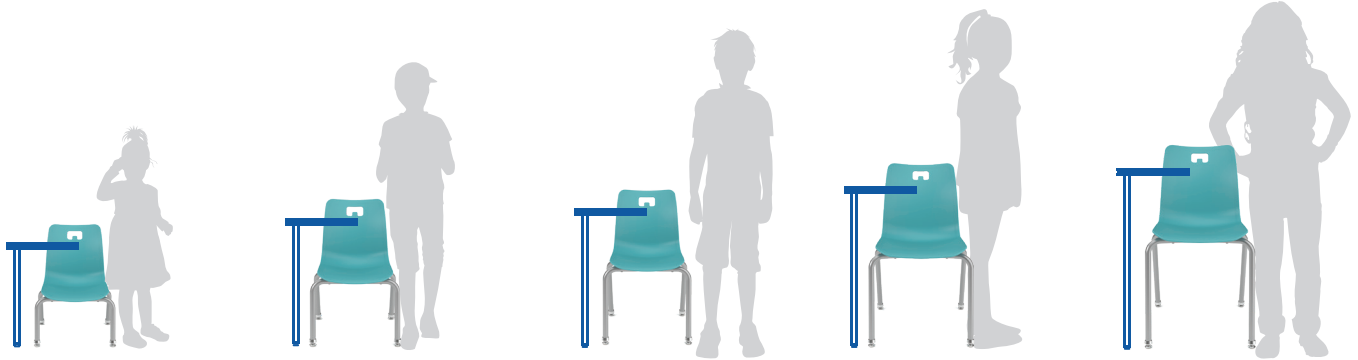
Roll control casters keep your chair stable, only rolling freely when weight is applied.



GLIDES

For E! Seating stacker and stool the standard is a glide nylon with felt glide upgrade option

SEATING AND TABLE GUIDELINES



EARLY LEARNING

SEAT HEIGHT
10"

SHELL SIZE: S

TABLE HEIGHT
18-20"

CHAIR TYPES:
Stacker

PREK - K

SEAT HEIGHT
12"

SHELL SIZE: S

TABLE HEIGHT
20-22"

CHAIR TYPES:
Stacker

K - 2ND

SEAT HEIGHT
14"

SHELL SIZE: S/M

TABLE HEIGHT
23-25"

CHAIR TYPES:
Stacker,
Reverse Cantilever

3RD - 4TH

SEAT HEIGHT
16"

SHELL SIZE: M

TABLE HEIGHT
25-27"

CHAIR TYPES:
Stacker,
Reverse Cantilever

5TH - 12TH

SEAT HEIGHT
18"

SHELL SIZE: M/L

TABLE HEIGHT
28-30"

CHAIR TYPES:
Stacker, Caster,
Reverse Cantilever



2ND - 12TH

SEAT HEIGHT
14-20"

SHELL SIZE: M/L

TABLE HEIGHT
23-32"

CHAIR TYPES:
Task



2ND - 12TH

SEAT HEIGHT
22-32"

SHELL SIZE: M

TABLE HEIGHT
30-44"

CHAIR TYPES:
Task Stool



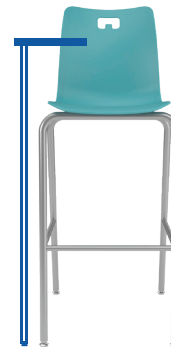
5TH - 12TH

SEAT HEIGHT
26"

SHELL SIZE: M

TABLE HEIGHT
36-40"

CHAIR TYPES:
Stool



8TH - 12TH

SEAT HEIGHT
30"

SHELL SIZE: M

TABLE HEIGHT
40-42"

CHAIR TYPES:
Stool

SEATING

ROCK™

Rock active stools elevate learning by promoting body movement and student engagement. The unique, patent-pending seat design encourages the kind of motion that turns tired, distracted students into active learners. Sturdy backless design, age-appropriate height options and gentle seat contours improve blood circulation, posture, attentiveness and eye-to-eye interaction.

SEAT

- 13.5" x 13.5" molded foam seat is comfortable and durable (dark graphite)
- 2" radius vertically
- 4" radius horizontally
- Patent pending mechanism allows seat to tilt in all directions

FRAME

- Fixed height options 18", 22", 26"
- Fully welded frame and footrest
- Painted frame
- Custom colors available

MOBILITY

- Oversized glides - all legs



18" STOOL

W: 13.5" square

H: 18"

Mobility: Oversized glides



22" STOOL

W: 13.5" square

H: 22"

Mobility: Oversized glides



26" STOOL

W: 13.5" square

H: 26"

Mobility: Oversized glides

SHIPPING

- Ships assembled

SEATING AND TABLE GUIDELINES



18" ROCK STOOL

SEAT HEIGHT

18"

TABLE HEIGHT

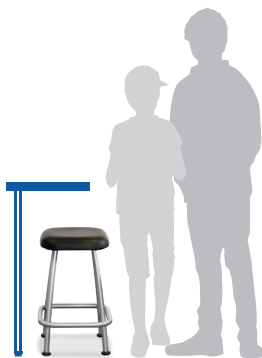
26-30"

GRADE & POSTURES

PreK - 2nd: Sit, Perch, Stand

3rd - 4th: Sit, Perch

5th - 12th: Sit



22" ROCK STOOL

SEAT HEIGHT

22"

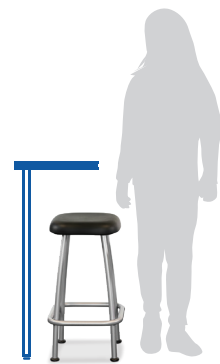
TABLE HEIGHT

31-37"

GRADE & POSTURES

3rd - 6th: Sit, Perch, Stand

7th - 12th: Sit, Perch



26" ROCK STOOL

SEAT HEIGHT

26"

TABLE HEIGHT

36-40"

GRADE & POSTURES

5th - 12th: Sit, Perch, Stand

SEATING

ROCK™

FLEETWOOD'S DEFINITIONS OF LEARNING POSTURES	
SIT	Rear fully in seat, hips at right angle, feet flat on floor or footrest. Focused and Settled
PERCH	Rear on edge of seat, hip angle open, feet on floor or footrest. Alert and Engaged
STAND	Rear out of seat and body upright. Active and Collaborative



SIT
Focused and Settled
 Rock's contoured, pivoting molded foam seat and integrated footrest enhance comfort while seated.



PERCH
Alert and Engaged
 The pivoting seat provides a stable and comfortable platform for shifting forward into a perched posture.



STAND
Active and Collaborative
 When paired with elevated worksurfaces, Rock allows for a seamless transition to standing.



PRODUCTIVE FIDGETING
 Our patented seat mechanism with 360 degrees of pivoting motion, facilitates various learning postures.



ROTATE
 The non-handed, backless seat enables students to easily swivel around as class focal points change.



EYE-TO-EYE
 Elevating students brings them eye-to-eye with teachers for improved interactions.

SUGGESTED WORKSURFACE HEIGHTS PER GRADE LEVEL						
	EARLY LEARNING	PreK-K	1-2	3-4	5-6	7-12+
STANDARD (Sit or Perch)	18"	20"	24"	26"	28"	29"
ELEVATED (Sit, Perch or Stand)	22"	24"	28"	32"	34"	37"
TALL (Stand or Sit)	24"	26"	30"	34"	37"	40"

SEATING

SOFT ROCK

Like the Rock stool, this fully upholstered seating solution is designed to encourage students to move in ways that naturally focus attention and engagement. It can be equipped with a special base that allows an even wider range of motion. Soft Rock is available in multiple heights to suit different body sizes and create a varied visual landscape.

STOOL

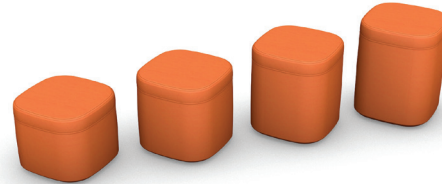
- Soft foam on top section for user comfort
- Dense foam in body for support
- Fully upholstered with detail stitching
- Choose stationary or active base in graphite
- Glides on base
- Nylon feet

FLOOR CUSHION

- Fully upholstered with detail stitching
- Soft foam interior

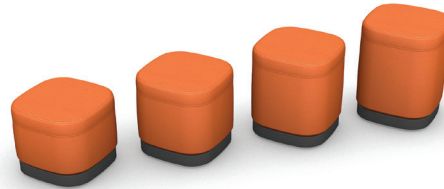
SHIPPING

- Ships assembled



STOOL - STATIONARY

- W: 14" square
- H: 12, 14, 16, 18"
- Fixed base



STOOL - ACTIVE

- W: 14" square
- H: 12, 14, 16, 18"
- Active base
- Body of stool moves in harmony with students



FLOOR CUSHION

- W: 14" square
- H: 2"

SEATING AND TABLE GUIDELINES

**12" SOFT ROCK**

SEAT HEIGHT
12"

TABLE HEIGHT
18-22"

GRADE & POSTURES
Early Learning: Perch
PreK - K: Sit

**14" SOFT ROCK**

SEAT HEIGHT
14"

TABLE HEIGHT
21-25"

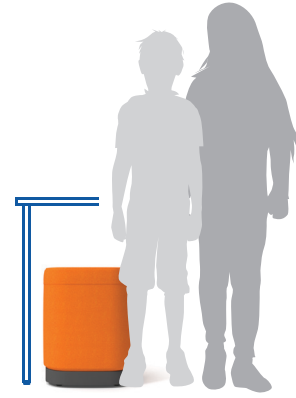
GRADE & POSTURES
PreK - K: Perch
1st - 2nd: Sit

**16" SOFT ROCK**

SEAT HEIGHT
16"

TABLE HEIGHT
24-28"

GRADE & POSTURES
1st - 2nd: Perch
3rd - 4th: Sit

**18" SOFT ROCK**

SEAT HEIGHT
18"

TABLE HEIGHT
26-30"

GRADE & POSTURES
3rd - 4th: Perch
5th - 12th: Sit

SUGGESTED WORKSURFACE HEIGHTS PER GRADE LEVEL

	EARLY LEARNING	PreK-K	1-2	3-4	5-6	7-12+
STANDARD (Sit or Perch)	18"	20"	24"	26"	28"	29"
ELEVATED (Sit, Perch or Stand)	22"	24"	28"	32"	34"	37"
TALL (Stand or Sit)	24"	26"	30"	34"	37"	40"

SEATING

SOFT ROCK



FIDGET FRIENDLY

Our patented active base mechanism provides just the right amount of pivoting motion while remaining stable and anchored in place.



SMART DESIGN

Detailed stitching, stain-resistant fabric, and dual-density foam optimize aesthetics, cleanability, comfort, and stability.



COMFORTABLE AND CONFIDENT

Designed to be comfortable for young students while supporting large adults, the main body of Soft Rock is very firm and light, while the top seat portion features a softer foam layer.



MULTIPLE HEIGHTS

Four height options ensure there is a Soft Rock for students of all sizes.

COMFORT AND FLEXIBILITY

The soft corners and round square shape of Soft Rock gives students the freedom to move, sit, and perch.



SEATING

BENCH

Sturdy, welded-frame bench complements our picnic table and adds alternate seating solutions to classrooms, commons, hallways and administrative waiting areas.

FIXED HEIGHT OPTIONS

- 14" and 18"

SEAT

- 1" thick HPL
- 3mm edgebanding

FRAME

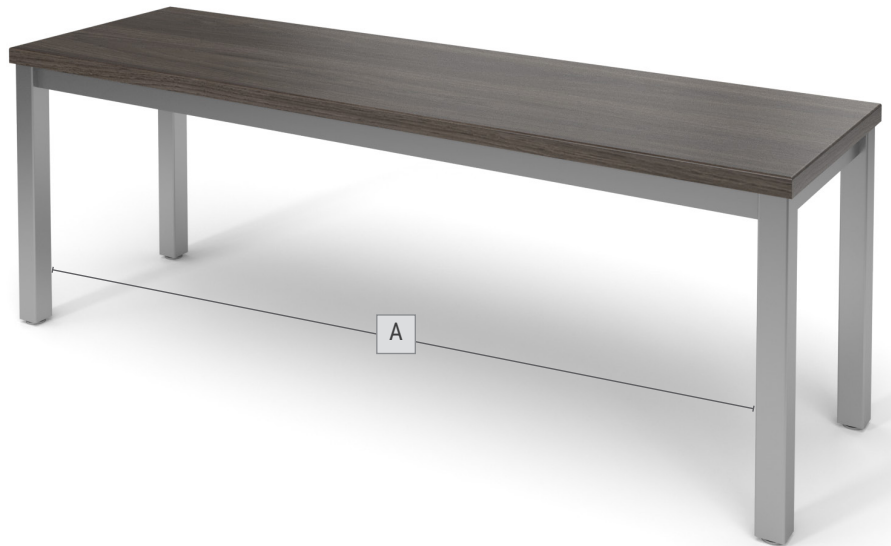
- Unitized, fully welded frame
- Rectangle legs

MOBILITY

- 1.5" diameter levelers - all legs

SHIPPING

- Seats ship stacked separately from frames
- Frames ship stacked
- Levelers installed



	Outside	Distance Between Legs (A)
Width	51"	47-1/2"
	63"	59-1/2"
Depth	15"	12-1/2"
Height	14"	-
	18"	-

SEATING

UTILITY STOOL

Our adjustable-height utility stool accommodates multiple student body heights, active learning and compressed footprints in art, STEM, CTE and makerspace classrooms. The sturdy steel construction and natural solid wood seat provide industrial-style aesthetics and performance in rigorous school environments.

SEAT

- 3/4" thick hardwood seat with clear coat finish
- 13" diameter

FRAME

- Unitized rectangle
- 18"-29" height adjustable
- 1" height adjustment increments
- Dual adjustment setting screws

MOBILITY

- 3/4" glides

SHIPPING

- Ships assembled



DIMENSIONS

	Frame	Seat
Width	15" Max	13"
Depth	15" Max	13"
Height	18-29"	.875"