

DESIGNER 2.0**SHELF****TOP**

- 1" thick
- HPL (under 68" high units)
- TFL (68" high units)
- 3mm edgeband

BACK

- TFL (default)
- Magnetic markerboard
- Magnetic pegboard

SHELF

- Adjustable, fixed, and base
- 100 lb. capacity
- TFL (default)
- Painted metal

DOOR

- Soft close 120° European hinge
- Keyed alike cylinder lock
- Lock plate on double door unit

PULL

- Arch pull - 128mm (default)
- Metro pull - 128mm
- Urban pull - 128mm

MOBILITY

- 100mm locking casters in two-tone gray

CASE

- Camlock design
- .75" thick laminate panels except for 1" thick top and bottom
- 1mm edgeband
- Metal reveal under top
- Bottom panel can act as a shelf

SHIPPING

- Ships assembled
- Pull, shelf and caster attached (as applicable)



DESIGNER 2.0

CURVED SHELF

TOP

- 1" thick
- HPL
- 3mm edgeband

BACK AND DIVIDER PANEL

- Magnetic pegboard

SHELF

- Adjustable and base
- 35 lb. capacity
- TFL

MOBILITY

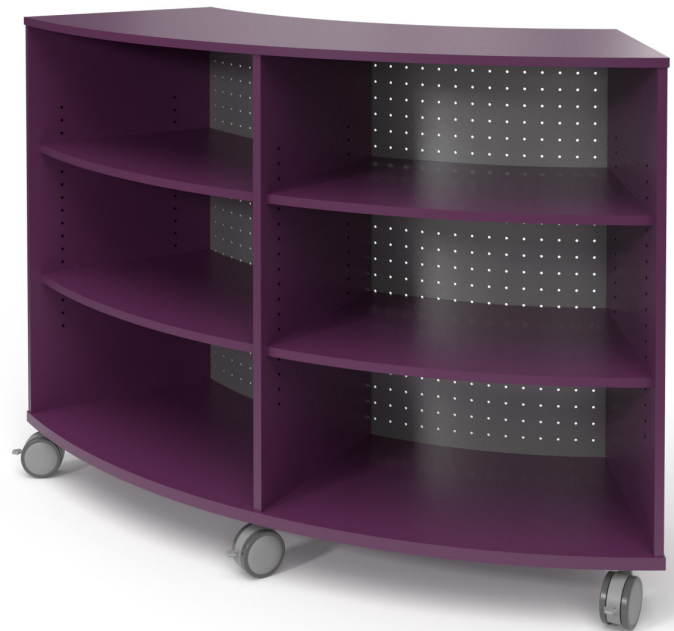
- 100mm locking casters in two-tone gray

CASE

- Camlock design
- .75" thick laminate panels except for 1" thick top and bottom
- 1mm edgeband
- 60" radius and 60° arc
- Bottom panel can act as a shelf

SHIPPING

- Ships assembled
- Shelf and caster attached (as applicable)



DESIGNER 2.0

CUBBY

TOP

- 1" thick
- HPL (under 68" high units)
- TFL (68" high units)
- 3mm edgeband

BACK

- TFL (default)
- Magnetic markerboard
- Magnetic pegboard

SHELF

- Adjustable, fixed, and base
- 35 lb. capacity
- TFL (default)
- Metal painted

DOOR

- Soft close 120° European hinge
- Keyed alike cylinder lock
- Lock plate on double door unit

PULL

- Arch pull - 128mm (default)
- Metro pull - 128mm
- Urban pull - 128mm

MOBILITY

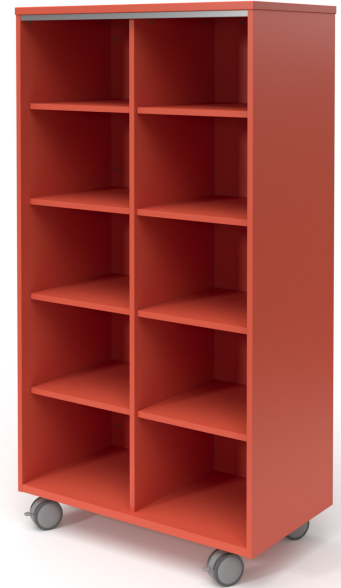
- 100mm locking casters in two-tone gray

CASE

- Camlock design
- .75" thick laminate panels except for 1" thick top and bottom
- 1mm edgeband
- Metal reveal under top

SHIPPING

- Ships assembled
- Shelf and caster attached



NOTE:

Cubby shelves are shipped to accommodate 3-ring binder height. When delivered, the top cubby opening may be shorter than other cubby heights because of the overall cabinet height restrictions. Cubby shelf height is adjustable in 32mm (1.26") increments, so adjust height to achieve desired cubby sizes. You can also add or subtract cubby shelves to achieve the desired number of compartments.

68"H units and above will have one fixed shelf at 43" from floor.

Cubby width is fixed and equally divided within the unit. To determine cubby width, subtract .75" for each vertical panel from the overall cubby storage width dimension. Take that number and divide by the number of vertical cavities. For example, for a 48"W cubby unit with 3 cubbies will have 4 vertical panels. The cubby width is 15".

See equation below.

(Overall width in inches-(#vertical panels x .75"))/3=cubby width (48-(4*.75))/3=15

DESIGNER 2.0

LOCKER

TOP

- 1" thick
- HPL (under 68" high units)
- TFL (68" high units)
- 3mm edgeband

BACK

- TFL (default)
- Magnetic markerboard
- Magnetic pegboard

SHELF

- Fixed and base
- 35 lb. capacity
- TFL (default)

MOBILITY

- 100mm locking casters in two-tone gray

CASE

- Camlock design
- .75" thick laminate panels except for 1" thick top and bottom
- 1mm edgeband
- Metal reveal under top
- 2 coat hooks per tall compartment

SHIPPING

- Ships assembled
- Pull, shelf and caster attached (as applicable)



DESIGNER 2.0

SHELF DRAWER

TOP

- 1" thick
- HPL (under 68" high units)
- TFL (68" high units)
- 3mm edgeband

BACK

- TFL (default)
- Magnetic markerboard
- Magnetic pegboard

SHELF

- Adjustable, fixed, and base
- 100 lb. capacity
- TFL (default)
- Painted metal

DRAWER

- Steel drawer bodies
- Full extension slides
- Keyed alike cylinder lock
- Independent lock per drawer
- 50 lb. weight capacity on box
- 150 lb. weight capacity on file

DOOR

- Soft close 120° European hinge
- Keyed alike cylinder lock
- Lock plate on double door unit

PULL

- Arch pull - 128mm (default)
- Metro pull - 128mm
- Urban pull - 128mm

MOBILITY

- 100mm locking casters in two-tone gray

CASE

- Camlock design
- .75" thick laminate panels except for 1" thick top and bottom
- 1mm edgeband
- Metal reveal under top
- Bottom panel can act as a shelf

SHIPPING

- Ships assembled
- Pull, shelf and caster attached (as applicable)



DESIGNER 2.0

WARDROBE

TOP

- 1" thick
- HPL
- TFL (68" high units)
- 3mm edgeband

BACK

- TFL (default)
- Magnetic markerboard
- Magnetic pegboard

SHELF

- Adjustable, fixed, and base
- 35 lb. capacity
- TFL (default)
- Metal painted

COAT ROD

- Metal, chrome plated

DRAWER

- Steel drawer bodies
- Full extension slides
- Keyed alike cylinder lock
- Independent lock per drawer
- 30 lb. capacity

DOOR

- Soft close 120° European hinge
- Keyed alike cylinder lock
- Lock plate on double door unit

PULL

- Arch pull - 128mm (default)
- Metro pull - 128mm
- Urban pull - 128mm

MOBILITY

- 100mm locking casters in two-tone gray

CASE

- Camlock design
- .75" thick laminate panels except for 1" thick top and bottom
- 1mm edgeband
- Metal reveal under top
- 2 side hooks on each large locker compartment
- Bottom panel can act as a shelf

SHIPPING

- Ships assembled
- Pull, shelf and caster attached (as applicable)



DESIGNER 2.0

TRAY

TOP

- 1" thick
- HPL (under 68" high units)
- TFL (68" high units)
- 3mm edgeband

BACK

- TFL (default)
- Magnetic markerboard
- Magnetic pegboard

SHELF (on select units)

- Adjustable and fixed
- 100 lb. capacity
- TFL (default)
- Painted metal

TRAY RAIL AND TRAY

- Gratnells brand
- Translucent
- 3" high tray (default).
Other sizes available.
- Tray rails installed in set increments

DOOR

- Soft close 120° European hinge
- Keyed alike cylinder lock
- Lock plate on double door unit

PULL

- Arch pull - 128mm (default)
- Metro pull - 128mm
- Urban pull - 128mm

MOBILITY

- 100mm locking casters in two-tone gray

CASE

- Camlock design
- .75" thick laminate panels except for
1" thick top and bottom
- 1mm edgeband
- Metal reveal under top

SHIPPING

- Ships assembled
- Pull, tray railing, tray and caster
attached (as applicable)



DESIGNER 2.0

FLOOR CUSHION

TOP

- 1" thick
- HPL
- 3mm edgeband

BACK

- TFL (default)
- Magnetic markerboard
- Magnetic pegboard (48" W only)

SHELF

- Fixed
- TFL
- 35 lb. capacity
- Metal painted

MOBILITY

- 100mm locking casters in two-tone gray
- 18" wide cabinets have 75mm locking casters in two-tone gray

CASE

- Camlock design
- .75" thick laminate panels except for 1" thick top and bottom
- 1mm edgeband
- Metal reveal under top

SHIPPING

- Ships assembled
- Casters attached
- Cushions available separately



DESIGNER 2.0

MARKERBOARD WITH TRAY OR CUSHION STORAGE

TOP

- 1" thick
- TFL (68" high storage)
- 3mm edgeband

SIDE

- HPL markerboard on each side

SHELF

- Adjustable and fixed
- TFL
- 35 lb. capacity

MOBILITY

- 100mm locking casters in two-tone gray

CASE

- Camlock design
- .75" thick laminate panels except for 1" thick top and bottom
- 1mm edgeband
- Metal reveal under top
- Markerboard on outer side panels
- Trays included
- Vertical section holds large markerboard pads or artboards

SHIPPING

- Ships assembled
- Tray attached (as applicable)
- Caster attached
- Order cushions separately



DESIGNER 2.0

POSTERBOARD DRAWER

TOP

- 1" thick
- HPL
- 3mm edgeband

BACK

- TFL (default)
- Magnetic markerboard
- Magnetic pegboard

DRAWER

- Steel drawer bodies
- Full extension slides
- No lock

PULL

- Arch pull - 128mm (default)
- Metro pull - 128mm
- Urban pull - 128mm

MOBILITY

- 100mm locking casters in two-tone gray

CASE

- Camlock design
- .75" thick laminate panels except for 1" thick top and bottom
- 1mm edgeband
- Metal reveal under top

SHIPPING

- Ships assembled
- Pull and caster attached (as applicable)



DESIGNER 2.0

POSTERBOARD SHELF

TOP

- 1" thick
- HPL
- 3mm edgeband

BACK

- TFL (default)
- Magnetic markerboard
- Magnetic pegboard

SHELF

- TFL (fixed)
- Metal front lip
- 35lb weight capacity

PULL

- Arch pull - 128mm (default)
- Metro pull - 128mm
- Urban pull - 128mm

MOBILITY

- 100mm locking casters in two-tone gray

CASE

- Camlock design
- .75" thick laminate panels except for 1" thick top and bottom
- 1mm edgeband
- Metal reveal under top

SHIPPING

- Ships assembled
- Pull and caster attached (as applicable)



DESIGNER 2.0

MOBILE PEDESTAL

DRAWER - BOX, FILE & TRAY COMBINATIONS

TOP

- 1" thick
- HPL
- 3mm edgeband

DRAWER

- Steel drawer bodies
- Full extension slides
- Keyed alike cylinder lock
- 30 lb. weight capacity

PULL

- Arch pull - 128mm (default)
- Metro pull - 128mm
- Urban pull - 128mm

TRAY RAIL AND TRAY (on select units)

- Gratnells brand
- Translucent
- 3" high tray (default).
Other sizes available.
- Tray rails installed in set increments

MOBILITY

- 75mm locking casters in two-tone gray

CASE

- Camlock design
- .75" thick laminate panels
- 1mm and 3mm edgeband

SHIPPING

- Ships assembled
- Pull and caster attached



Box/box/file



File/file ped



Open/file



Tray



Box/file

DESIGNER 2.0

PRESENTATION CART

WORKSURFACE

- 1" thick
- HPL (default)
- 3mm edgeband on HPL tops
- 2.5" diameter grommet

BACK

- TFL (default)
- Magnetic markerboard
- Magnetic pegboard

SHELF

- Fixed (exposed shelf)
- Adjustable and base (internal)
- 100 lb. capacity fixed
- 35 lb. capacity adjustable
- TFL

TRAY RAIL AND TRAY

- Gratnells brand
- Translucent
- 3" high tray (default).
Other sizes available
- Tray rails installed in set increments

DOOR

- Soft close 120° European hinge
- 22 wide cabinet - 24 wide top
non-locking door
- 30 wide cabinet - 36 or 42 wide top
locking door

PULL

- Arch pull - 128mm (default)
- Metro pull - 128mm
- Urban pull - 128mm

MOBILITY

- 100mm locking casters in two-tone gray

CASE

- Camlock design
- .75" thick laminate panels except for
1" thick bottom
- 1mm and 3mm edgeband
- 2.5" diameter side panel grommet
- Minitap power unit with 72" cord (option)

SHIPPING

- Ships assembled
- Pull, tray, shelf, power unit, and
caster attached



DESIGNER 2.0

PROJECT CART

WORKSURFACE

- 1" thick
- HPL (default)
- 3mm edgeband on HPL tops
- Chemical resistant HPL
- Phenolic resin
- Maple block (1.75" thick)
- Power outlet (PWR210STM)

BACK

- TFL (default)
- Magnetic markerboard
- Magnetic pegboard

SHELF

- Fixed (exposed shelf)
- Adjustable and base (internal)
- 35 lb. capacity
- TFL (default)
- Metal painted (adjustable only)

TRAY RAIL AND TRAY

- Gratnells brand
- Translucent
- 3" high tray (default).
Other sizes available.
- Tray rails installed in set increments

DRAWER

- Steel drawer bodies
- Full extension slides
- Keyed alike cylinder lock
- 30 lb. weight capacity

DOOR

- Soft close 120° European hinge
- Keyed alike cylinder lock

PULL

- Arch pull - 128mm (default)
- Metro pull - 128mm
- Urban pull - 128mm

MOBILITY

- 100mm locking casters in two-tone gray

CASE

- Camlock design
- .75" thick laminate panels except for 1" thick tops and bottoms
- 1mm edgeband
- Metal reveal under top
- Steel handle with plate on side panel
- Bottom panel can act as a shelf

SHIPPING

- Ships assembled
- Pull, tray, shelf, power unit, and caster attached



DIMENSIONS

	Outside	Inside			
		Drawer	Closed Storage	Open Storage	Tray Storage
Width	42"	12.12"	13.12"	26.18"	12.62"
Depth	20"	14.38"	18"	18"	18"
Height	36"	4"	22.75"	5.38"	23.18"

Shelf depth - 1 side access 17.27"

DESIGNER 2.0

3D PRINTER CART

TOP

- 1" thick
- HPL
- 3mm edgeband
- Apparatus rod assembly
- 2.5" grommet

BACK

- TFL (default)
- Magnetic markerboard
- Magnetic pegboard

SHELF

- Adjustable and base
- 100 lb. capacity
- TFL (default)
- Painted metal
- All shelves have 2.5" grommets

DOOR

- Soft close 120° European hinge
- Keyed alike cylinder lock
- Lock plate on double door unit

PULL

- Arch pull - 128mm (default)
- Metro pull - 128mm
- Urban pull - 128mm

MOBILITY

- 100mm locking casters in two-tone gray

CASE

- Camlock design
- .75" thick laminate panels except for 1" thick top and bottom
- 1mm edgeband
- Metal reveal under top
- Bottom panel can act as a shelf
- Bottom has 2.5" grommet

SHIPPING

- Ships assembled
- Apparatus rod assembly field installed
- Pull, shelf and caster attached (as applicable)



DESIGNER 2.0

MONITOR CART

TOP

- 1" thick
- HPL (Storage)
- TFL (Hutch)
- 3mm edgeband

BACK

- TFL (default)
- Removable access panel (Hutch only)

SHELF

- Adjustable and base
- 100 lb. capacity
- TFL (default)

DOOR

- Soft close 120° European hinge

PULL

- Arch pull - 128mm (default)
- Metro pull - 128mm
- Urban pull - 128mm

MOBILITY

- 100mm locking casters in two-tone gray

CASE

- Camlock design
- .75" thick laminate panels except for 1" thick tops and bottoms
- 1mm edgeband
- Metal reveal under hutch and lower storage top
- Bottom panel can act as a shelf

SHIPPING

- Ships assembled
- Hutch, pull, shelf, power unit, and caster attached
- Monitor, TV, cabling, and mounting hardware are not included



Monitor not included