

DESIGNER 2.0 SPECIFICATION

Types of storage units:

- Rectilinear open and doored shelving, single and double side access
- Rectilinear doored shelving with bottom drawers
- Curved (Arc) open shelving, single and double side access
- Cubby open storage, single and double side access
- 3D printer cart
- Project cart
- Floor cushion storage
- Double sided markerboard cabinet with cushion storage
- Double sided markerboard cabinet with tray storage
- Monitor cart
- Presentation cart – see separate product specification document
- Mobile pedestal – see separate product specification document
- Drawer storage
- Tray open and doored storage
- Wardrobes with shelves and/or drawers
- Lockers

Dimension logic:

- Product designed on 6" width module. Unit widths are 30", 36", 42", 48", and 60". Floor Cushion storage is 32.5" wide.
- Product designed on of 24", 29", 37", 44", and 68" height logic. Platform height logic aligns with Illusions 2.0 platform and Fleetwood table heights.
- Product designed at 20" deep (20.08"), except for 5 drawer storage which is 27" deep (27.08")
- Product width and height dimensioning is nominal.

Standard features:

- .75" thick 45lb. density particleboard substrate with a balanced construction of color-matched, thermally fused laminate (TFL) on both sides of all horizontal and vertical outer and internal panels and shelves, except bottom panels. Bottom panels and top are constructed of 1" thick 45lb particleboard.
- Particleboard worksurfaces (44" high and below) have 1" thick 45lb. density particleboard substrate and feature balanced construction with high pressure laminate (HPL) on top and .028" cabinet liner backer on bottom of worksurface. In addition to standard HPL, markerboard HPL or custom HPLs are available.
- Particleboard tops (68" high and above) have 1" thick 45lb. density particleboard substrate and feature balanced construction with a balanced construction of color-matched, thermally fused laminate (TFL) on both sides.
- Permanently attached 3mm edgeband (on the worksurfaces and tops) and 1mm (on all other panels) color-matched or coordinating PVC edgeband with ergonomic 1/8" radiused top edge bonded with hot-melt adhesive and trimmed flush on top, bottom, and sides of all visible portions of cabinets to create pry-proof edges and structural integrity. Contrasting edgeband available on worksurfaces.
- In addition to standard TFL back panels, magnet-accepting steel pegboard or magnet-accepting steel whiteboard backs available. Pegboard accepts off-the-shelf pegboard hardware.

- Cabinets are constructed using 8mm wood dowels for alignment and strength, and mechanical CAM locks for attachment. CAM lock system consists of 10mm steel and plastic mechanical dowels and 15mm zinc cam locks. #8 and #10 sized screws are used for partition and angle iron attachment.
- Cabinets that are 20" deep will have counter-balance weights to prevent tipping.
- Structural .75" x.75" metal front reveal integrated to control deflection as needed on tops and shelving. The painted reveal also provides a unifying aesthetic detail.
- Plate-mounted casters secured to cabinets with 5/16-1" hex head lag bolts.
- Plate-mounted 100mm diameter casters with twin-wheel swivel with non-marking thermoplastic elastomer tread for quiet use on hard or carpeted flooring. Nylon casters were tested to hold 225 pounds and roll over uneven surfaces.
- .75" thick particleboard or 20-gauge cold rolled steel shelving supported by steel brackets and plastic retainers so shelving cannot be accidentally dislodged.
- Shelf placement holes on 32mm increments to allow for shelf repositioning in field.
- Gratnells brand insertable tray storage units with interchangeable, durable plastic trays in 3", 6" and 12" heights and are 12-1/2" wide and 17" deep. Tray color is translucent. When not in the unit, trays may be nested or stacked.
- 20-gauge cold-rolled steel drawer construction on box and file drawers mounted to 16-gauge, non-binding full-extension drawer slides on both box and file drawers. Drawers finished with electrostatically applied powder coating.
- Hinges are European style with 120-degree swing and soft close feature.
- Individual drawer and door cylinder-type locking mechanisms on closed storage units keyed alike within the cabinet.
- Door and drawer pulls are ADA compliant arch-shaped pulls that are 128mm on-center, 148mm in length with 30mm projection. Optional pulls, Urban or Metro are 128mm on-center, 138mm in length with 25mm projection.
- 100% factory-assembled storage. Units can be rolled into place with no assembly required in the field for quick and easy installation.

Optional features:

- Plastic tray combination options (3", 6" and 12" high) on all units with tray storage. Tray lids available.
- Additional shelves available on request

Surface materials palette:

- Thermally Fused Laminate (TFL) is available in woodgrains, solids, or patterns. 31 standard options with coordinating edgeband color.
- High Pressure Laminate (HPL) is available in woodgrains, solids, or patterns. 31 standard options with coordinating or contrasting edgeband colors. Wilsonart laminates also available as a graded-in custom material.
- Paint is available in 4 standard options
- Custom TFL and HPL (worksurfaces only) through specials request process with coordinating 3mm vinyl edgeband.
- Buying relationships established with Wilsonart, Formica, Nevamar, Pionite/Panolam, and other suppliers.

Overall:

- Cloth blanket wrapped and carton packaging options are available. If cartoned, skids are made from recycled materials.

Warranty highlights:

- Fleetwood brand products carry a limited lifetime warranty, where products are warranted to be free of defects in materials and workmanship for the life of the product.
- Normal wear-and-tear is not covered under the warranty. Unauthorized alterations, improper maintenance, or abuse nulls warranty.
- Fleetwood will repair or replace free-of-charge any component that fails under normal use or provide refund or credit.
- Laminates, casters, levelers, and flip-and-nest mechanisms have a 12-year warranty.
- Some products have limited life coverage of 3 or 5 years. See full warranty statement for details.
- Consumables, natural variations in product, and select non-standard products not covered under limited lifetime warranty.
- See full warranty statement for details.

DESIGNER 2.0 MOBILE PEDESTAL SPECIFICATION

Types of pedestals:

- Mobile pedestal with open/file drawer combination
- Mobile pedestal with file/file drawer combination
- Mobile pedestal with box/box/file drawer combination
- Mobile under-worksurface pedestal with box/file combination
- Mobile pedestal with Gratnells trays

Standard features:

- .75" thick 45lb. density particleboard substrate with a balanced construction of color-matched, thermally fused laminate (TFL) on both sides of all horizontal and vertical outer and internal panels, bottom, and shelves.
- Tops have 1" thick 45lb. density particleboard substrate and feature balanced construction with high pressure laminate (HPL) on top and .028" cabinet liner backer on bottom of worksurface.
- Permanently attached 1mm color-matched or coordinating PVC edge band with ergonomic 1/8" radiused top edge bonded with hot-melt adhesive and trimmed flush on top and bottom panels to create pry-proof edges and structural integrity. Worksurface has 3mm color-matched or coordinating PVC edge band permanently bonded with hot-melt adhesive and trimmed flush on top and bottom.
- Ends and back are butt jointed and screwed together using 16-gauge angle brackets and #10x5/8" Phillips panhead screws. Bottom is butt jointed to ends and back with Mod-eez® clip connectors and 16-gauge angle brackets and #10x5/8" phillips panhead screws. Tops attached with 16-gauge angle brackets and #10x5/8" Phillips panhead screws. Structural 1"x1" steel angle integrated to control deflection as needed on tops and shelving.
- Cabinets secured to (4) plate-mounted casters with #10x5/8" phillips sheet metal panhead screws.
- Plate-mounted 75mm diameter casters with twin wheel swivel with non-marking thermoplastic elastomer tread for quiet use on hard or carpeted flooring. Casters tested to hold 225 pound each (900 pounds for 4 casters) and roll over uneven surfaces.
- Gratnells-brand insertable tray storage units with interchangeable, durable trays in 3", 6" and 12" heights and are 12-1/2" wide and 17" deep. Tray color is translucent. When not in unit, trays may be nested or stacked.
- 20-gauge cold-rolled steel drawer construction on box and file drawers mounted to 16", non-binding full-extension drawer slides on both box and file drawers. Drawers finished with electrostatically applied powder coating.
- Drawer pulls are ADA compliant arch-shaped pulls that are 128mm on center, 148mm in length with 30mm projection. Optional pull, Metro or Urban, is 128mm on center, 138mm in length with 25mm projection.
- Individual drawer cylinder-type locking mechanisms on closed storage units keyed alike within the cabinet.
- 100% factory-assembled storage. Units can be rolled into place with no assembly required in field for quick and easy installation.

Optional features:

- Plastic tray combination options (3", 6" and 12" high) on all units with tray storage. Tray lids available.

Surface materials palette:

- Thermally Fused Laminate (TFL) available in woodgrains, solids, or patterns. 31 standard colors with coordinating edgeband colors.
- High Pressure Laminate (HPL) available in wood grain, patterned, or solid color palette. 31 standard options with coordinating edgeband colors. Wilsonart laminates also available as a graded-in custom material.
- Paint is available in 4 standard colors.
- Custom TFL and HPL (worksurfaces only) through specials request process with coordinating 3mm vinyl edgeband.
- Buying relationships established with Wilsonart, Formica, Nevamar, Pionite/Panolam, and other suppliers.

Overall:

- Cloth blanket wrapped and cartoned packaging options available. If cartoned, skids are made from recycled materials.

Warranty highlights:

- Fleetwood brand products carry a limited lifetime warranty, where products are warranted to be free of defects in materials and workmanship for the life of the product.
- Normal wear-and-tear is not covered under the warranty. Unauthorized alterations, improper maintenance, or abuse nulls warranty.
- Fleetwood will repair or replace free-of-charge any component that fails under normal use or provide refund or credit.
- Laminates, casters, levelers, and flip-and-nest mechanisms have a 12-year warranty.
- Some products have limited life coverage of 3 or 5 years. See full warranty statement for details.
- Consumables, natural variations in product, and select non-standard products not covered under limited lifetime warranty.
- See full warranty statement for details.

DESIGNER 2.0 PRESENTATION CART SPECIFICATION

Types of storage units:

- Presentation carts
- Available in 3 sizes:
 - 24" wide x 22" deep worksurface with 22" wide storage cabinet
 - 36" wide x 22" deep worksurface with 30" wide storage cabinet
 - 42" wide x 28" deep worksurface with 30" wide storage cabinet

Standard features:

- Cabinet panels, all horizontal and vertical outer and internal panels and shelves, are constructed using .75" thick 45lb. density particleboard substrate with a balanced construction of color-matched, thermally fused laminate (TFL) on both sides. Bottom panels constructed of 1" thick 45lb particleboard. Permanently attached 1mm color matched or coordinating PVC edge band with 1/8" radiused top edge bonded with hot-melt adhesive and trimmed flushed on top, bottom, and all sides of all visible portions of cabinet panels to create pry-proof edges and structural integrity. Visible cabinet panels will use 3mm edge band.
- Worksurface is 1" thick 45lb. density particleboard substrate and feature balanced construction with high pressure laminate (HPL) on top and .5mm cabinet liner backer on bottom of worksurface. In addition to standard HPL, markerboard HPL, and custom laminates available. Permanently attached 3mm color-matched or coordinating PVC edge band with ergonomic 1/8" radiused top edge bonded with hot-melt adhesive and trimmed flush on top, bottom, and sides of all visible portions of worksurface to create pry-proof edges and structural integrity
- Optional back panel material - Perforated magnetic steel 18-gauge back on storage to support hanging and posting of materials in classrooms or magnetic steel 18-gauge solid back on storage finished with white markerboard paint to support additional writing surface.
- Chrome metal L-bracket and screw butt-joint construction with screws contained to inside of unit. #10 sized screws utilized. Structural 1"x1" steel angle integrated to control deflection as needed on tops and shelving.
- Cabinets secured to plate-mounted casters with 5/16-1" Hex head log bolts
- Stem-mounted 100mm diameter casters with twin-wheel swivel with non-marking thermoplastic elastomer tread for quiet use on hard or carpeted flooring. Nylon casters tested to hold 225 pounds and roll over uneven surfaces.
- .75" thick particleboard shelving secured with metal screws so shelving cannot be accidentally dislodged
- Shelf placement holes on 32mm increments to allow for shelf repositioning in field
- 2.5" diameter cable passthrough at back of presentation carts
- Gratnells-brand insertable tray storage units with interchangeable, durable plastic trays in 3", 6" and 12" heights and are 12-1/2" wide and 17" deep. Tray color is translucent. When not in unit, trays may be nested or stacked.
- Hinges are European style with 120-degree swing and soft close feature
- Keyed-alike lock on 30" wide storage cabinet door. 24" wide storage cabinet door is non-locking.
- Door pulls are ADA compliant arch-shaped pulls that are 128mm on center, 148mm in length with 30mm projection. Optional pulls, Metro or Urban are 128mm on center, 138mm in length with 25mm projection.
- Optional power - Minitap Power unit with 2 outlets and 72" cord. Factory installed if selected.
- 100% factory-assembled storage. Units can be rolled into place with no assembly required in field for quick and easy installation.



Optional features:

- Plastic tray combination options (3", 6" and 12" high) on all units with tray storage. Tray lids available.

Surface materials palette:

- Thermally Fused Laminate (TFL) available in woodgrains, solids, or patterns. 31 standard colors with coordinating edgeband colors.
- High Pressure Laminate (HPL) available in wood grain, patterned, or solid color palette. 31 standard options with coordinating edgeband colors. Wilsonart laminates also available as a graded-in custom material.
- Paint is available in 4 standard colors.
- Custom TFL and HPL (worksurfaces only) through specials request process with coordinating 3mm vinyl edgeband.
- Buying relationships established with Wilsonart, Formica, Nevamar, Pionite/Panolam, and other suppliers.

Overall:

- Cloth blanket wrapped and cartoned packaging options available. If cartoned, skids are made from recycled materials.

Warranty highlights:

- Fleetwood brand products carry a limited lifetime warranty, where products are warranted to be free of defects in materials and workmanship for the life of the product.
- Normal wear-and-tear is not covered under the warranty. Unauthorized alterations, improper maintenance, or abuse nulls warranty.
- Fleetwood will repair or replace free-of-charge any component that fails under normal use or provide refund or credit.
- Laminates, casters, levelers, and flip-and-nest mechanisms have a 12-year warranty.
- Some products have limited life coverage of 3 or 5 years. See full warranty statement for details.
- Consumables, natural variations in product, and select non-standard products not covered under limited lifetime warranty.
- See full warranty statement for details.



HARMONY MUSIC STORAGE SPECIFICATION

Types of units:

- Instrument storage cabinets with 1 to 15 compartments
- Garment storage
- Music storage
- String rack mobile storage
- Folio storage
- Podium

Standard features on instrument and garment storage cabinets:

- .75" thick 45lb. density particleboard substrate with a balanced construction of color-matched, thermally fused laminate (TFL) on both sides of all horizontal and vertical outer and internal panels and doors.
- Particleboard tops (60" high and above) have .75" thick 45lb. density particleboard substrate and feature balanced construction with a balanced construction of color-matched, thermally fused laminate (TFL) on both sides.
- Permanently attached 3mm and 1mm thick color-matched or coordinating PVC edge band bonded with hot-melt adhesive to all visible portions of cabinets and trimmed flush. 3mm edge band has ergonomic 1/8" radiused edge. All laminate door fronts have 3mm thick color-matched or coordinating PVC edge band bonded with hot-melt adhesive and trimmed flush.
- Cabinets feature institutional-use construction methodology with screws and zinc-plated steel brackets that support on-site panel replacement. Cabinet bottoms attached to ends using concealed modular clips with shoulder screws and 16-gauge steel brackets fastened with #10x5/8" phillips panhead screws.
- Shelves and bottom covers constructed of .080 GA textured ABS plastic and feature a radiused cover front that is ribbed from front to back.
- Shelf placement holes on 32mm increments to allow for shelf repositioning in field. Shelves held in place with 16-gauge zinc-plated steel shelf clips (1/8" thick by 1" wide) and (4) #8x5/8" Phillips panhead screws.
- Hinges are flush, 5-knuckle inset style with 110-degree swing. Doors on 84" high units have magnetic door clasp. 27" wide cabinets have one door. 48" wide have 2 doors.
- All doors include hasp lock and label identification holder with plastic cover. Optional keyed cylinder locks available for laminate doors.
- Steel wireframe doors are fabricated from 3/16" diameter wire for vertical inner wireframe and 5/16" diameter wire for door frame, creating a welded steel wire door with a durable electrostatically applied powder coat finish.
- Laminate doors have ADA compliant arch-shaped pulls that are 128mm on center, 148mm in length with 30mm projection.
- All cabinets include adjustable floor levelers factory installed with 1/2" of adjustment
- 100% factory-assembled storage except corner units.
- Units can be placed with no or minimal use of fillers, which give a more built-in appearance.

Standard features on music storage cabinets:

- .75" thick 45lb. density particleboard substrate with a balanced construction of color-matched, thermally fused laminate (TFL) on both sides of all horizontal and vertical outer and internal panels.
- Shelves are constructed of 1" thick 45lb. density particle board substrate with a balanced construction of color-matched, thermally fused laminate (TFL) on both sides



- Permanently attached 3mm color-matched or coordinating PVC edge band with ergonomic 1/8" radiused edge bonded with hot-melt adhesive and trimmed flush on top, bottom, and sides of all visible portions.
- Cabinet guide frames made with 1" square 16-gauge welded steel tubing. Cabinet guide is attached to floor with 14-gauge steel L brackets. Wall channel fabricated from 14-gauge steel. Cross supports fabricated from 14-gauge steel. Bumper tube fabricated from 1" square 16-gauge welded steel tubing. Rear support channel fabricated from 10-gauge cold-rolled steel. All metal parts are powder coated.
- Bolted-on, rigid, 8" diameter casters with 2" wide non-marking wheel tread.
- Cabinet assembled with a combination of 16-gauge angle brackets, #10x5/8" pan head screws and 50mm long hex-drive connector screws.
- Shelf clip holes on 32mm spacing, and shelves mount with 16-gauge steel shelf clips.
- Nylon oval-shaped pull rated for 484lb load.
- Label holder standard.

Standard features on music racks:

- .75" thick 45lb. density particleboard substrate with a balanced construction of color-matched, thermally fused laminate (TFL) on both sides of all horizontal and vertical outer and internal panels.
- Permanently attached 3mm color-matched or coordinating PVC edge band with ergonomic 1/8" radiused edge bonded with hot-melt adhesive and trimmed flush on top, bottom, and sides of all visible portions of racks. Edge of lower front and back has vinyl T-molding and is covered with 3/16" thick protective carpet.
- Rack storage features 75mm diameter, plate-mounted casters with twin wheel swivel with non-marking urethane tread for quiet use on hard or carpeted flooring. Casters attached with 10-24 phillips panhead screws and lock nuts. Nylon casters tested to hold 165 pounds each (660 pounds total) and roll over uneven surfaces.
- 1" square, 17-gauge steel support tubes connected with 16-gauge angle brackets.
- Panels and dividers are butt jointed and connected with a combination of dowels, 50mm and 60mm long hex-drive connector screws.
- Support tubes attach to lower front and back panel and ends with #10x1-1/2" Hex head and #10x5/8" Phillips panhead screws.
- Hooks attached to upper back to support instrument bows
- 100% factory-assembled storage. Units can be rolled into place with no assembly required in field for quick and easy installation

Standard features on folio cabinets:

- .75" thick 45lb. density particleboard substrate with a balanced construction of color-matched, thermally fused laminate (TFL) on both sides of all horizontal and vertical outer and internal panels except center and bottom partitions, which use 1" thick 45lb. particleboard.
- Permanently attached 3mm and 1mm thick color-matched or coordinating PVC edge band bonded with hot-melt adhesive to all visible portions of cabinets and trimmed flush. 3mm edge band has ergonomic 1/8" radiused edge. All laminate door fronts have 3mm thick color-matched or coordinating PVC edge band bonded with hot-melt adhesive and trimmed flush.
- Shelves are made from 1/8" thick tempered hardboard.
- Folio cabinets feature 100mm diameter, plate-mounted casters with locking twin wheel swivel with non-marking urethane tread for quiet use on hard or carpeted flooring. Casters attached 5/16x1" lag bolts. Nylon casters tested to hold 225 pounds each (900 total) and roll over uneven surfaces.
- 100% factory-assembled storage. Units can be rolled into place with no assembly required in field for quick and easy installation

Standard features on podium:

- .75" thick 45lb. density particleboard substrate with a balanced construction of color-matched, thermally fused laminate (TFL) on both sides of all horizontal and vertical outer and internal panels.
- Permanently attached 3mm and 1mm thick color-matched or coordinating PVC edge band bonded with hot-melt adhesive to all visible portions of cabinets and trimmed flush. 3mm edge band has ergonomic 1/8" radiused edge. All laminate door fronts have 3mm thick color-matched or coordinating PVC edge band bonded with hot-melt adhesive and trimmed flush.
- Podium platform covered with 3/16" thick protective carpet material
- Guard rail assembly constructed of 1-1/4" square, 16-gauge steel tubing and 1"x1-1/2" rectangular, 16-gauge steel tubing. Assembly finished with electrostatically applied powder coating.
- Panels attached with 16-gauge zinc plated angle brackets and #10x5/8" Phillips panhead screws. Guard rail assembly attached to podium backs with 1-1/2" square, 16-gauge steel tubing, 1/8" thick flat wire and 1/4"x2" round lock pins. Upper podium has swing-away locking clamp secured to lower podium.

Surface materials palette:

- Thermally Fused Laminate (TFL) available in woodgrains, solids, or patterns. 31 standard options with coordinating edgeband colors.
- Paint for wire framed doors is silver. Guard rail assembly for podium, cabinet guide and wall-mount for sheet music storage is black.
- Arch-shaped pull available in chrome.
- Custom TFL through specials request process with coordinating 3mm vinyl edgeband.
- Buying relationships established with Wilsonart, Formica, Nevamar, Pionite/Panolam, and other suppliers.

Overall:

- Cloth blanket wrapped and cartoned packaging options available. If cartoned, skids are made from recycled materials.

Warranty highlights:

- Fleetwood brand products carry a limited lifetime warranty, where products are warranted to be free of defects in materials and workmanship for the life of the product.
- Normal wear-and-tear is not covered under the warranty. Unauthorized alterations, improper maintenance, or abuse nulls warranty.
- Fleetwood will repair or replace free-of-charge any component that fails under normal use or provide refund or credit.
- Laminates, casters, levelers, and flip-and-nest mechanisms have a 12-year warranty.
- Some products have limited life coverage of 3 or 5 years. See full warranty statement for details.
- Consumables, natural variations in product, and select non-standard products not covered under limited lifetime warranty.
- See full warranty statement for details.

ILLUSIONS 2.0 STORAGE SPECIFICATION

Types of storage units:

- Open and doored shelving cabinets
- Drawer cabinets
- Desks
- Open and doored sink cabinets
- Open and doored tray cabinets
- Spanning worksurfaces
- Corner fillers
- Open and doored wall mounted cabinets, including corner cabinets
- Wardrobes
- Base fillers and wall mounted fillers
- Freestanding locker
- Cubby cabinets
- Hutches
- Monitor Hutch
- Bookcases
- Sliding markerboard units to use with monitor hutch

Dimension Logic:

- Product designed on 3" and 6" width module. Units range from 15" wide to 48" wide.
- Product designed at 20" deep to support footprint compression or 24" deep for conventional planning.
- Product designed on 29", 33", 37", 68" 76", and 84" height logic. Platform height logic aligns with Designer 2.0 platform and Fleetwood table heights.
- All dimensioning is nominal.

Standard features:

- .75" thick 45lb. density particleboard substrate with a balanced construction of color-matched, thermally fused laminate (TFL) on both sides of all horizontal and vertical outer and internal panels, toe kick and shelves, except bottom panels. Bottom panels and top are constructed of 1" thick 45lb particleboard.
- Particleboard worksurfaces (44" high and below) have 1" thick 45lb. density particleboard substrate and feature balanced construction with high pressure laminate (HPL) on top and .028" cabinet liner backer on bottom of worksurface. In addition to standard HPL, markerboard HPL or custom HPLs are available.
- Particleboard tops (68" high and above) have 1" thick 45lb. density particleboard substrate and feature balanced construction with a balanced construction of color-matched, thermally fused laminate (TFL) on both sides.
- Permanently attached color-matched or coordinating PVC edgeband that is 3mm on front edge of top panel, and 1mm on all other visible edges and panels. 3mm edgeband has ergonomic 1/8" radiused top edge. Edgeband is bonded with hot-melt adhesive and trimmed flush on top, bottom, and sides of all visible portions of cabinets to create pry-proof edges and structural integrity.
- Cabinets are constructed using 8mm wood dowels for alignment and strength, and mechanical CAM locks for attachment. CAM lock system consists of 10mm steel and plastic mechanical dowels and 15mm zinc cam locks. #8 and #10 sized screws are used for partition and angle iron attachment.

- Stand-alone Base and Tall Cabinets that are 20" deep will have counter-balance weights to prevent tipping. 20" deep Base and Tall Cabinets that are ganged together during installation will not have counter-balance weights. Bookcases 14" deep, require attachment to a wall and will not have counter-balance weights.
- Structural .75" x .75" metal reveal is integrated on the top front of all units and backs of base units to control deflection.
- Cabinets are standard with levelers. 68" high and below cabinets have the option for both adjustable levelers and casters. 15" wide and 18" wide base cabinets are standard with levelers, regardless of height.
 - Levelers:
 - 4 leveling glides that are concealed underneath cabinet are inserted into threaded steel brackets which are attached to the end panels, and back or toe kick with #10 wood screws.
 - Front and back levelers can be adjusted with a special wrench at the base of the leveler.
 - Levelers have adjustment range of 4"
 - Concealed Casters
 - The casters are plate-mounted, ball-bearing swivel design with molded plastic wheels with 2" diameter and 1-5/8" wide hard rubber tread.
 - Casters evaluated to each hold 300 pounds (total of 1,200 pounds per unit) and roll over uneven surfaces.
 - All casters are lag bolted to a 1" thick bottom panel with four screws.
 - All casters are concealed behind toe kick assembly and have no exposed fasteners
- .75" thick particleboard or 20-gauge cold rolled steel shelving supported by steel brackets and plastic retainers so shelving cannot be accidentally dislodged.
- Shelf placement holes on 32mm increments to allow for shelf repositioning in field
- Gratnells-brand insertable frosted tray storage units with interchangeable, durable plastic trays in 3", 6" and 12" heights and are 12-1/2" wide and 17" deep. When not in unit, trays may be nested or stacked.
- 20-gauge cold-rolled steel drawer construction on box and file drawers mounted to 16-gauge, non-binding full-extension drawer slides on both box and file drawers.
- Individual drawer and door cylinder-type locking mechanisms on closed storage units and keyed alike within the cabinet. Keyed- alike available across multiple units. Tall Wardrobe, GWF1, has non-locking doors.
- Hinges are European style with 120-degree swing and soft close feature.
- Door and drawer pulls are ADA compliant arch-shaped pulls that are 128mm on-center, 148mm in length with 30mm projection. Optional pulls, Urban or Metro are 128mm on-center, 138mm in length with 25mm projection.
- All case storage is factory-assembled. Caster units can be rolled into place, connected using field-installed through-bolt connectors, and transitioned to leveler support quickly and easily. Corner fillers are also factory-assembled.
- Spanner worksurfaces are field installed, while matched-width independent tops are factory-installed on base cases.
- Flat-panel .75" thick particleboard fillers are not factory-assembled and are custom-fit and installed in the field.
- Base cabinets connect using field-installed through-bolt connectors.
- Sink size accommodated is dependent on the sink brand and style of sink (drop-in vs undermount).
 - Max sink width = Cabinet width less 6.5"
 - Max sink depth = Cabinet depth less 7.25"
 - For example: 36" wide x 20" deep cabinet will hold a maximum 29.5" wide x 12.75" deep sink. 48" wide x 20" deep cabinet will hold a maximum 41.5" wide x 12.75" deep sink.
- Hutch cabinets have 10-gauge steel mounting plates factory installed to the bottom side of each hutch end panel with #10 x 2" flat head screws. Hutch is field installed to the top surface of the base cabinet using #10 x 3/4" flat head screws. Hutches connect to other hutches with through-bolt connectors. Hutches may also be connected to walls based on local codes.

- Sliding markerboard units to be used with Learning Wall Hutch and Learning Wall Monitor Hutch cabinets with extended top that provide a mounting surface for the top track of the sliding markerboard unit. The length of the sliding markerboard unit is determined by the total width of the hutch cabinets select. The unit is (3) tracks to accommodate up to 4 sliding markerboards.
 - Sliding Markerboard panel writing surface will be Writanium® 28-gauge steel face with porcelain enamel finish, fused to the steel sheet using a continuous coil process and shall be fused at a temperature of 1450 degrees. The gloss of the writing surface will not increase more than three units when subjected to wearability tests specified in testing procedures for 30 hours. Panel core material is 1/2" honeycomb with backing material that is .015" aluminum backing sheet. Panel metal trim shall be 6063 aluminum alloy with a T5 temper and 3/4" face. Panels shall have finger pulls, one pair per sliding panel.
 - Track shall be aluminum extrusions with clear satin anodized finish. Top Track is one-piece with integral fascia. Bottom track is one piece with smoothly curved ends. Map rail is standard 2" high continuous rail with colored cork insert. Nylon Rollers: Two per panel up to 4' wide and three per panel up to 8' wide. Nylon Guides: Two per panel up to 4' wide and three per panel up to 8' wide.

Optional features:

- Plastic tray combination options (3", 6" and 12" high) on all units with tray storage. Tray lids available.
- Concealed Casters in addition to levelers.
 - Casters not available on 14" deep bookcases, sinks, desks, 15" wide and 18" wide base cabinets, 76" and 84" tall cabinets, or 48" wide cabinets that are 68" high with doors.
 - The casters are plate-mounted, ball-bearing swivel design with molded plastic wheels with 2" diameter and 1-5/8" wide hard rubber tread.
 - Casters evaluated to each hold 300 pounds (total of 1,200 pounds per unit) and roll over uneven surfaces.
 - All casters are lag bolted to a 1" thick bottom panel with four screws.
 - All casters are concealed behind toe kick assembly and have no exposed fasteners
- Additional shelves available
 - Laminate
 - .75" thick 45lb. density particleboard substrate with a balanced construction of color-matched, thermally fused laminate (TFL) on both sides with permanently attached color-matched or coordinating PVC edgeband that is 1mm thick on all edges.
 - Steel brackets and plastic retainers included
 - Metal
 - 20-gauge cold rolled steel shelving with electro-static powder coat paint finish
 - Steel brackets and plastic retainers included

Custom features:

- Custom sizes and configurations through specials request process

Surface materials palette:

- Thermally Fused Laminate (TFL) is available in woodgrains, solids, or patterns. 31 standard options with coordinating edgeband color.
- High Pressure Laminate (HPL) for worksurface/backsplash is available in woodgrains, solids, or patterns. 31 standard options with coordinating or contrasting edgeband colors. Wilsonart laminates, Chemical Resistant HPL, and Phenolic Resin also available as a graded-in custom material.
- Paint is available in 4 standard options.
- Arch-shaped pull available in chrome. 4 paint colors for Metro or Urban pull.
- Custom TFL and HPL (worksurfaces only) through specials request process with coordinating 3mm vinyl edgeband.
- Buying relationships established with Wilsonart, Formica, Nevamar, Pionite/Panolam, and other suppliers.

Overall:

- Cloth blanket wrapped and carton packaging options available. If cartoned, skids are made from recycled materials.

Warranty highlights:

- Fleetwood brand products carry a limited lifetime warranty, where products are warranted to be free of defects in materials and workmanship for the life of the product.
- Normal wear-and-tear is not covered under the warranty. Unauthorized alterations, improper maintenance, or abuse nulls warranty.
- Fleetwood will repair or replace free-of-charge any component that fails under normal use or provide refund or credit.
- Laminates, casters, levelers, and flip-and-nest mechanisms have a 12-year warranty.
- Some products have limited life coverage of 3 or 5 years. See full warranty statement for details.
- Consumables, natural variations in product, and select non-standard products not covered under limited lifetime warranty.
- See full warranty statement for details.

LIBRARY 2.0 STORAGE SPECIFICATION

Types of units:

- Build-Up Bookcase
 - Single sided and double-sided stationary starter bookcase
 - Single sided and double-sided stationary adder bookcase
 - Single sided and double-sided end of run panel
 - Light blocking vertical filler with top or vertical filler only
- Assembled Bookcase
 - Single sided and double-sided stationary bookcase
 - Double sided moveable bookcase
 - Double sided split shelf moveable bookcase
 - Curved Shelf open mobile shelving (*See Designer 2.0 specification sheet*)
- Desking solutions (*See Transaction Desk specification sheet*)
 - Modular units that connect in the field
 - Workstations – tables and transaction counters in straight and curved versions
 - Cabinets – fixed at worksurface height and mobile to slide under worksurface
 - Book returns
- Book display solutions
 - Mobile book trucks
 - Mobile book browsers
- Carrels – stand-alone, starter and adders (*See Carrel specification sheet*)
- Mobile pedestals: with drawers, shelves and/or trays (*See Designer 2.0 Mobile Pedestal specification sheet.*)
- Presentation carts (*See Designer 2.0 Presentation Cart specification sheet*)
- Tables (*See Table specification sheets*)
 - Full End Panel tables in multiple heights (*See Full End Panel and Carrel specification sheet*)
 - Picnic Table and Bench (*See Picnic Table and Bench specification sheet*)
 - Multi-shape group tables with metal leg supports in multiple heights (*See Post Leg, I-Leg, Flip & Nest or Unitized Frame specification sheets*)
 - Rectangle desks (*See Unitized Frame specification sheet*)

Standard features on Build-Up Bookcases:

- Starter and adder units shipped ready to assemble (RTA) with appropriate camlock locations on all panels.
 - Starter units have one end panel on the left side. Top extends on the right to accept the adjacent adder or end of run panel.
 - Adder units have one end panel with shelf holes running through end panel. The top is inset on the left to accept the adjacent starter unit top.
 - All starter or adder units have 4”H adjustable levelers.
 - All starter and adder units have adjustable shelves. After positioning, the middle shelf on the first and last bookcase in the run must be secured in place to prevent bowing.
 - All shelving runs start with one starter unit with unlimited adder units lengthening the shelving run. End-of-run panel is used to complete a shelving run.
 - Fillers may be used to conceal gaps between shelving run and an adjacent wall(s) or between adjoining bookcases in a corner, T or X application.

- Starter and adder shelving units are joined together in the field with camlocks. Top assembly attaches to ends and back with camlocks.
- Shelves attached with metal shelf clips.
- .75" thick 45lb. multi-density particleboard substrate with a balanced construction of color-matched, thermally fused laminate (TFL) on both sides on end panels, backs, base assembly, bottom assembly, and most shelves. Permanently attached 1mm color-matched or coordinating PVC edge band bonded with hot-melt adhesive and trimmed flush on all visible edges non-user touch-point edges.
- Worksurfaces and tops have 1" thick 45lb. density particleboard substrate and feature balanced construction of color-matched, thermally fused laminate (TFL). Permanently attached 3mm and 1mm color-matched or coordinating PVC edge band bonded with hot-melt adhesive and trimmed flush on all user touch-point edges.
- Adjustable shelf options include laminate, metal, or display. Shelf placement holes on 32mm increments allow for shelf repositioning in the field.
 - Laminate - .75" thick 45lb. multi-density particleboard substrate with a balanced construction of color-matched, thermally fused laminate (TFL) on both sides with attached 1mm color-matched PVC edgeband. Shelves are secured with metal shelf pins designed to prevent accidental dislodgement.
 - Metal - 20-gauge powder-coated rolled steel shelves.
 - Display – 20-gauge powder-coated rolled steel with book rest stop
- Base assembly features camlock-dowel construction structure to form a toe kick.
- Bottom shelves have 1" thick 45lb. density particleboard substrate and feature balanced construction of color-matched, thermally fused laminate (TFL) with 1mm color-matched edge band bonded with hot-melt adhesive and trimmed flush. Bottom shelves have secure press-fit rubber bumper connection to base assembly to allow easy access to levelers.
- Top assembly includes metal support reveal constructed from
- Adjustable levelers, 4" high, are located at the inside corners and accessible from inside by removing the bottom assembly top.
- Units can be repositioned over their lifetime as desired.
- The top, bottom shelf, and base subassemblies are constructed at the factory. End panels, intermediate panels, backs/partitions, and shelves installed on-site.

Standard features of Assembled Bookcase:

- .75" thick 45lb. multi-density particleboard substrate with a balanced construction of color-matched, thermally fused laminate (TFL) on both sides on end panels, backs, base assembly, bottom assembly, and most shelves. Permanently attached 1mm color-matched or coordinating PVC edge band bonded with hot-melt adhesive and trimmed flush on all visible edges non-user touch-point edges.
- Worksurfaces for bookcases 48" high and shorter have 1" thick 45lb. density particleboard substrate and feature balanced construction with high pressure laminate (HPL) on top and .5mm cabinet liner backer on bottom of worksurface. Permanently attached 3mm and 1mm color-matched or coordinating PVC edge band bonded with hot-melt adhesive and trimmed flush on all user touch-point edges.
- Tops for bookcases 60" high and taller have 1" thick 45lb. density particleboard substrate and feature balanced construction of color-matched, thermally fused laminate (TFL). Permanently attached 3mm and 1mm color-matched or coordinating PVC edge band bonded with hot-melt adhesive and trimmed flush on all user touch-point edges.
- Adjustable shelf options include laminate, metal, or display. Shelf placement holes on 32mm increments allow for shelf repositioning in the field.
 - Laminate - .75" thick 45lb. multi-density particleboard substrate with a balanced construction of color-matched, thermally fused laminate (TFL) on both sides with attached 1mm color-matched PVC edgeband. Shelves are secured with metal shelf pins designed to prevent accidental dislodgement.
 - Metal - 20-gauge powder-coated rolled steel shelves.

- Display – 20-gauge powder-coated rolled steel with book rest stop
- Base assembly features camlock-dowel construction structure to form a toe kick.
- Bottom shelves have 1" thick 45lb. density particleboard substrate and feature balanced construction of color-matched, thermally fused laminate (TFL) with 1mm color-matched edge band bonded with hot-melt adhesive and trimmed flush. Bottom shelves have secure press-fit rubber bumper connection to base assembly to allow easy access to levelers.
- Top assembly includes metal support reveal constructed from
- Adjustable levelers, 4" high, are located at the inside corners and accessible from inside by removing the bottom assembly top.
- Units can be repositioned over their lifetime as desired.
- Bookcases are fully assembled at the factory. All shelves are installed at the factory prior to shipment.

Standard features of Assembled Moveable Bookcase(includes split shelf bookcase):

- .75" thick 45lb. multi-density particleboard substrate with a balanced construction of color-matched, thermally fused laminate (TFL) on both sides on end panels, backs, base assembly, bottom assembly, and most shelves. Permanently attached 1mm color-matched or coordinating PVC edge band bonded with hot-melt adhesive and trimmed flush on all visible edges non-user touch-point edges.
- Worksurfaces for bookcases 48" high and shorter have 1" thick 45lb. density particleboard substrate and feature balanced construction with high pressure laminate (HPL) on top and .5mm cabinet liner backer on bottom of worksurface. Permanently attached 3mm and 1mm color-matched or coordinating PVC edge band bonded with hot-melt adhesive and trimmed flush on all user touch-point edges.
- Tops for bookcases 60" high and taller have 1" thick 45lb. density particleboard substrate and feature balanced construction of color-matched, thermally fused laminate (TFL). Permanently attached 3mm and 1mm color-matched or coordinating PVC edge band bonded with hot-melt adhesive and trimmed flush on all user touch-point edges.
- Adjustable shelf options include laminate, metal, or display. Shelf placement holes on 32mm increments allow for shelf repositioning in the field.
 - Laminate - .75" thick 45lb. multi-density particleboard substrate with a balanced construction of color-matched, thermally fused laminate (TFL) on both sides with attached 1mm color-matched PVC edgeband. Shelves are secured with metal shelf pins designed to prevent accidental dislodgement.
 - Metal - 20-gauge powder-coated rolled steel shelves.
 - Display – 20-gauge powder-coated rolled steel with book rest stop
- Base assembly features camlock-dowel construction structure to form a toe kick.
- Bottom shelves have 1" thick 45lb. density particleboard substrate and feature balanced construction of color-matched, thermally fused laminate (TFL) with 1mm color-matched edge band bonded with hot-melt adhesive and trimmed flush. Bottom shelves have secure press-fit rubber bumper connection to base assembly to allow easy access to levelers.
- Top assembly includes metal support reveal constructed from
- Concealed 2" non-locking casters are attached using 5/16-9 x 5/8" lag bolts to a false bottom.
- Units can be repositioned over their lifetime as desired.
- Bookcases are fully assembled at the factory. All shelves are installed prior to shipment.

Standard features on book truck/browser units:

- .75" and 1" thick 45lb. multi-density particleboard substrate with a balanced construction of color-matched, thermally fused laminate (TFL) on both sides of all horizontal and vertical outer and internal panels.
- Permanently attached 3mm color-matched or coordinating PVC edge band with ergonomic 1/8" radiused edge bonded with hot-melt adhesive and trimmed flush on top, bottom, and sides of all visible user touch-point edges to create pry-resistant edges and structural integrity.
- Mobile book trucks feature plate-mounted 100mm diameter casters with twin wheel swivel with non-marking thermoplastic elastomer tread for quiet use on hard or carpeted flooring. Nylon casters tested to hold 225 pounds each (900 pounds for 4 casters) and roll over uneven surfaces. All casters are equipped with a brake. Cabinets secured to casters with four 5/16x1" Hex head lag bolt per caster.
- Mobile browsers feature plate-mounted 75mm diameter casters with twin wheel swivel with non-marking thermoplastic elastomer tread for quiet use on hard or carpeted flooring. Casters tested to hold 225 pounds each (900 pounds for 4 casters) and roll over uneven surfaces. All casters are equipped with a brake. Cabinets secured to plate-mounted casters with 5/16-1" Hex head log bolts.
- Shipped assembled with casters attached.

Optional features:

- Additional shelves
- Space planning guidelines
- Wrench for levelers

Surface materials palette:

- Thermally Fused Laminate (TFL) is available in woodgrains, solids, or patterns. 31 standard colors with coordinating edgeband colors.
- Custom TFL and HPL through specials request process with coordinating 3mm vinyl edgeband.
- Buying relationships established with Wilsonart, Formica, Nevamar, Pionite/Panolam, and other suppliers.

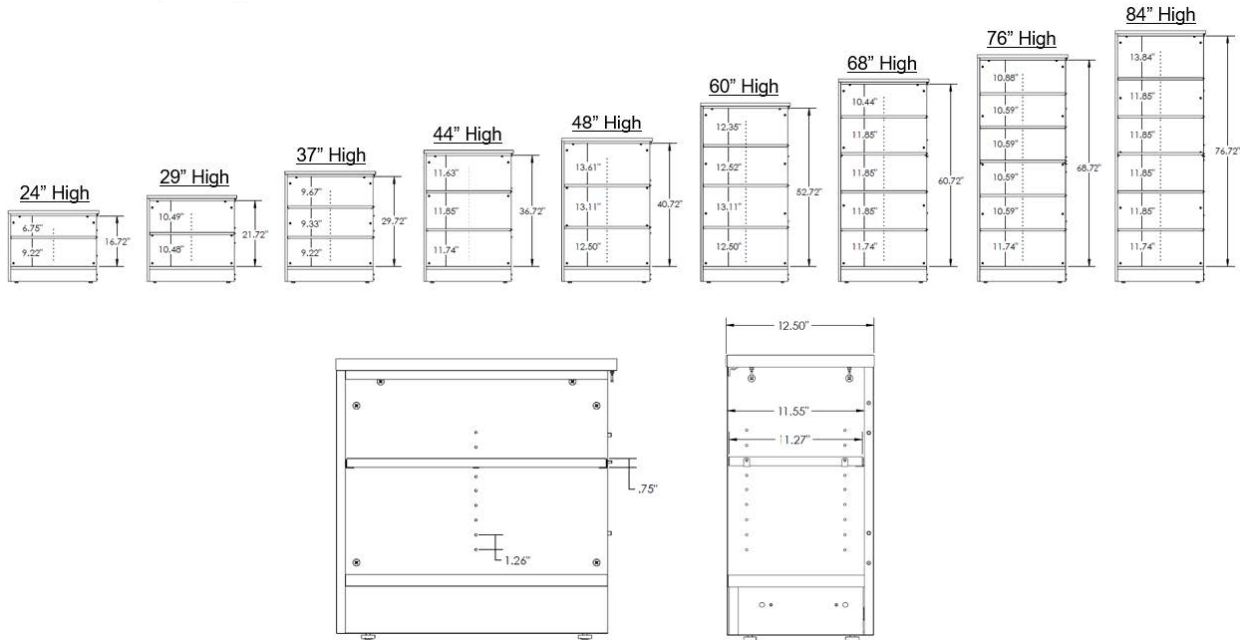
Overall:

- Cloth blanket wrapped and carton packaging options are available. If cartoned, skids are made from recycled materials.

Warranty highlights:

- Fleetwood brand products carry a limited lifetime warranty, where products are warranted to be free of defects in materials and workmanship for the life of the product.
- Normal wear-and-tear is not covered under the warranty. Unauthorized alterations, improper maintenance, or abuse nulls warranty.
- Fleetwood will repair or replace free-of-charge any component that fails under normal use or provide refund or credit.
- Laminates, casters, levelers, and flip-and-nest mechanisms have a 12-year warranty.
- Some products have limited life coverage of 3 or 5 years. See full warranty statement for details.
- Consumables, natural variations in product, and select non-standard products not covered under limited lifetime warranty.
- See full warranty statement for details.

Build-up and Assembled Bookcase shelf spacing guidelines:



Understanding Shelf Capacity:

When calculating the number of books for different bookcase heights:

1. Include the number of shelves called out in the price list chart
2. Add one (1) additional shelf for the bookcase bottom panel, which acts as a shelf.

So, if (1) shelf is shown, use two (2) shelves instead in calculations

Book Type	Items per lineal foot	Items per 24" W Bookcase shelf*	Items per 30" W Bookcase shelf*	Items per 36" W Bookcase shelf*
Youth Fiction	10	18	23	28
Youth Notification	11	20	26	31
Picture Book	19	35	45	54
Easy Reader	23	43	54	66
Teen Fiction	11	20	26	31
Teen Notification	11	20	26	31
Adult Fiction	11	20	26	31

* 1.5" subtracted to allow for two 3/4" thick end panels.

SHEERLINE STORAGE SPECIFICATION

Types of storage units:

- Rectilinear open and doored shelving
- Elongated drawer storage
- Wardrobes
- Tray storage
- Project carts
- Demonstrator
- Workstations

Standard features:

- Shelves and bottom panel fabricated from 20-gauge cold-rolled steel .
- Support channels formed from 16-gauge cold-rolled steel with edges deburred to create a refined edge
- All metal frame parts and shelves finished with an electrostatically applied powder coating.
- Cabinet wood panels made with .75" thick 45lb. density particleboard substrate with a balanced construction of color-matched, thermally fused laminate (TFL) on both sides of all horizontal and vertical outer and internal panels. Permanently attached 1mm color-matched or coordinating PVC edge band with ergonomic 1/8" radiused top edge bonded with hot-melt adhesive and trimmed flush on top panels to create pry-proof edges and structural integrity on exposed panels.
- Particleboard worksurfaces (44" high and below) have 1" thick 45lb. density particleboard substrate and feature balanced construction with high pressure laminate (HPL) on top and .028" cabinet liner backer on bottom of worksurface. In addition to standard HPL, Markerboard HPL or custom HPLs are available.
- Particleboard tops (60" high and above) have 1" thick 45lb. density particleboard substrate and feature balanced construction with a balanced construction of color-matched, thermally fused laminate (TFL) on both sides.
- Particleboard worksurface or top have permanently attached 3mm color-matched or coordinating PVC edge band with ergonomic 1/8" radiused top edge bonded with hot-melt adhesive and trimmed flush on top panels to create pry-proof edges and structural integrity.
- The top of units with doors or drawers shall be reinforced with .75" x .75" structural steel angle.
- End and back panels attached to the cabinet top with 16-gauge steel brackets fastened with #10 x 5/8" pan head screws on 34" units. Panels shall be secured in steel frame with 2" long and #10 x 21/2" long #10 oval-head screws. Tops shall be fastened to the frames using KV clips. Shelf placement holes on 32mm increments using 5mm shelf clips to allow for shelf repositioning in field.
- (4) ball-bearing, swivel-stem casters with sleeve-bearing axles integrated into cabinet steel frame on the extreme outboard corners to maintain maximum cabinet stability. Industrial polyurethane wheels shall be 5" in diameter with 1-1/4" wide non-marking thermoplastic elastomer tread for quiet use on hard or carpeted flooring. Locking casters standard on front two casters. Casters tested to hold 300 lbs. each (1,200 total) and roll over uneven surfaces.
- 20-gauge cold-rolled steel drawer construction on box and file drawers mounted to 16", non-binding full-extension drawer slides on both box and file drawers. Drawers finished with electrostatically applied powder coating.
- Hinges are institutional overlay style with 270-degree swing.

- A single throw locking device is installed on the right-hand and catches behind the angle iron. Cabinets 60" high and taller, the lock catches behind the fixed shelf. Small round magnets are mounted to the angle iron and each door.
- Door and drawer pulls are ADA compliant arch-shaped pulls that are 128mm on-center, 148mm in length with 30mm projection. Optional pull, Metro or Urban, is 128mm on center, 138mm in length with 25mm projection.
- Gratnells-brand insertable frosted tray storage units with interchangeable, durable (plastic type) trays in 3", 6" and 12" heights and are 12-1/2" wide and 17" deep. Tray color is translucent. When not in unit, trays may be nested or stacked.
- Factory-assembled storage. Units can be rolled into place with no assembly required in field for quick and easy installation.

Optional features:

- Plastic tray combination options (3", 6" and 12" high) on all units with tray storage. Tray lids available.
- Additional shelves available on request

Surface materials palette:

- Thermally Fused Laminate (TFL) available in woodgrains, solids, or patterns. 31 standard colors with coordinating edgeband colors.
- High Pressure Laminate (HPL) for workstation worksurfaces available in wood grain, patterned, or solid color palette. 31 standard options with coordinating edgeband colors. Wilsonart laminates also available as a graded-in custom material.
- 4 paint colors for frame, bottom, and shelves.
- Arch-shaped pull available in chrome. 4 paint colors for Metro or Urban pull.
- Door hinges are color coordinated to frame color.
- Custom TFL and HPL (worksurfaces only) through specials request process with coordinating 3mm vinyl edgeband
- Buying relationships established with Wilsonart, Formica, Nevamar, Pionite/Panolam, and other suppliers.

Overall:

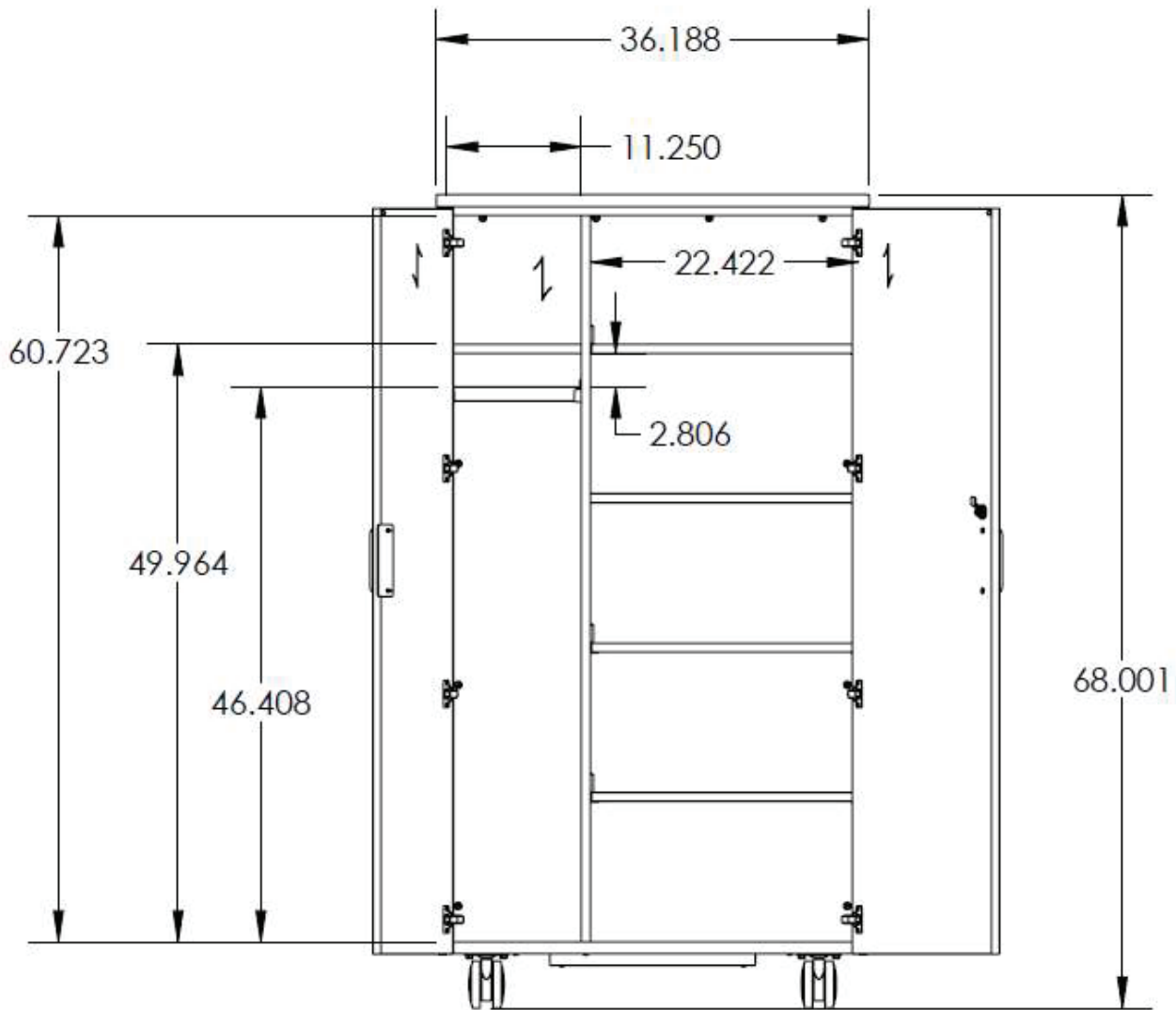
- Cloth blanket wrapped and cartoned packaging options available. If cartoned, skids are made from recycled materials.

Warranty highlights:

- Fleetwood brand products carry a limited lifetime warranty, where products are warranted to be free of defects in materials and workmanship for the life of the product.
- Normal wear-and-tear is not covered under the warranty. Unauthorized alterations, improper maintenance, or abuse nulls warranty.
- Fleetwood will repair or replace free-of-charge any component that fails under normal use or provide refund or credit.
- Laminates, casters, levelers, and flip-and-nest mechanisms have a 12-year warranty.
- Some products have limited life coverage of 3 or 5 years. See full warranty statement for details.
- Consumables, natural variations in product, and select non-standard products not covered under limited lifetime warranty.
- See full warranty statement for details.

DESIGNER 2.0

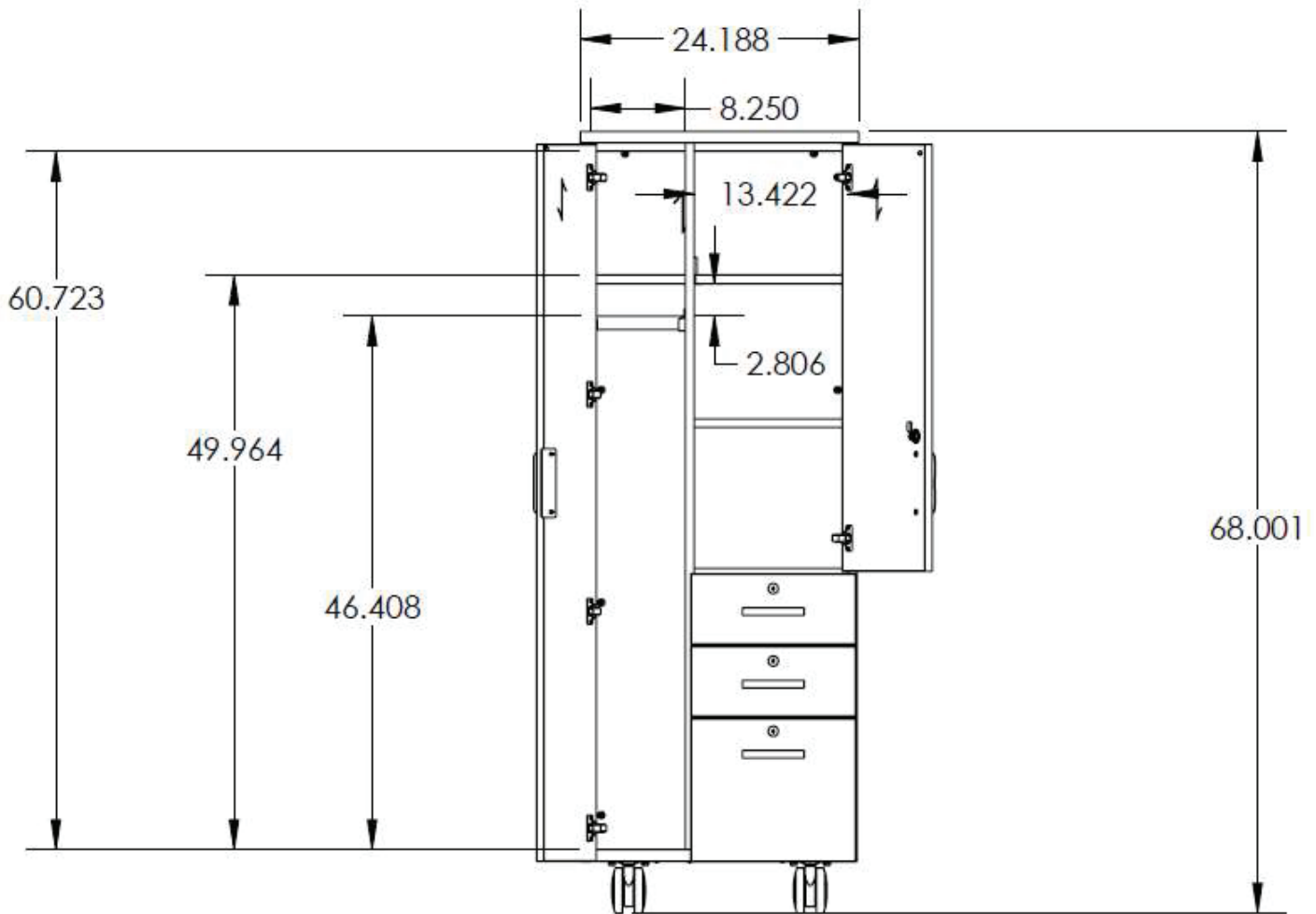
WARDROBE DIMENSIONS



DWC13620684D
CABINET, SF, WRDRB, 36W X 68H
, DOORS

DESIGNER 2.0

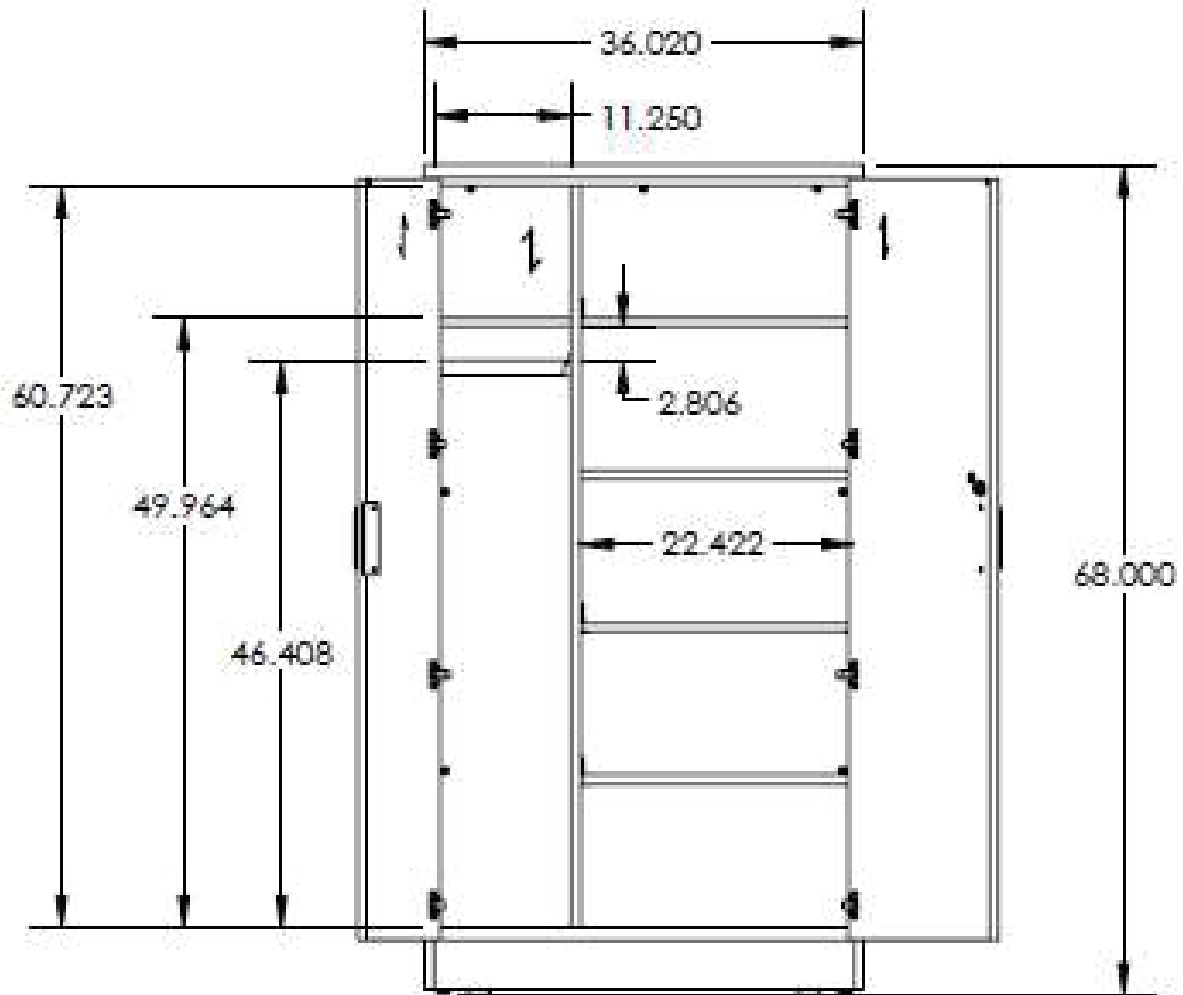
WARDROBE DIMENSIONS



DWT12420684D
CABINET, SF, WRDRB, 24W X 68H
, DOORS, WOOD BACK

WARDROBE

DIMENSIONS

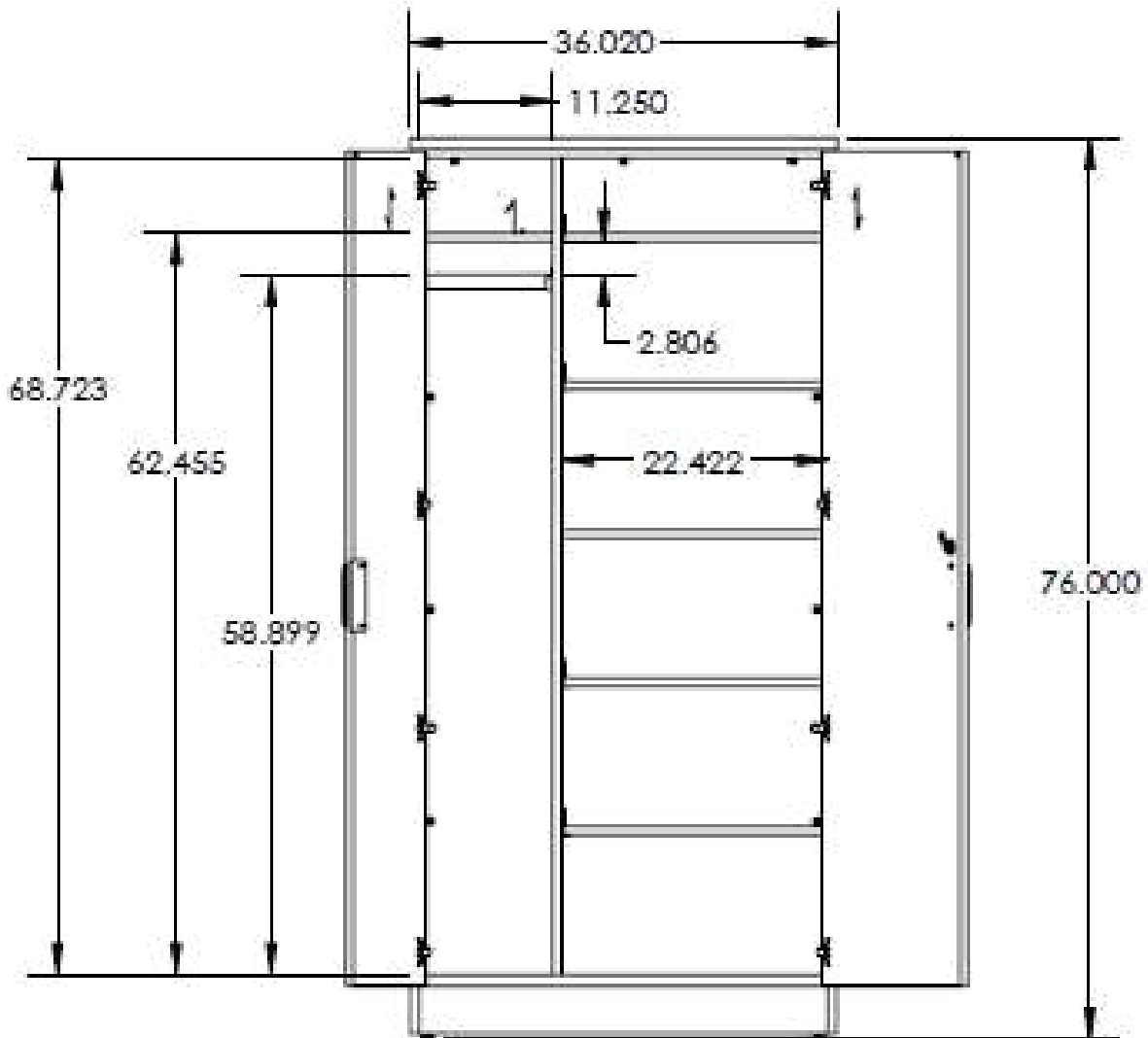


GWC1362068CD
CABINET, SF, WRDRB, 36W X 68H, DR

ILLUSIONS 2.0

WARDROBE

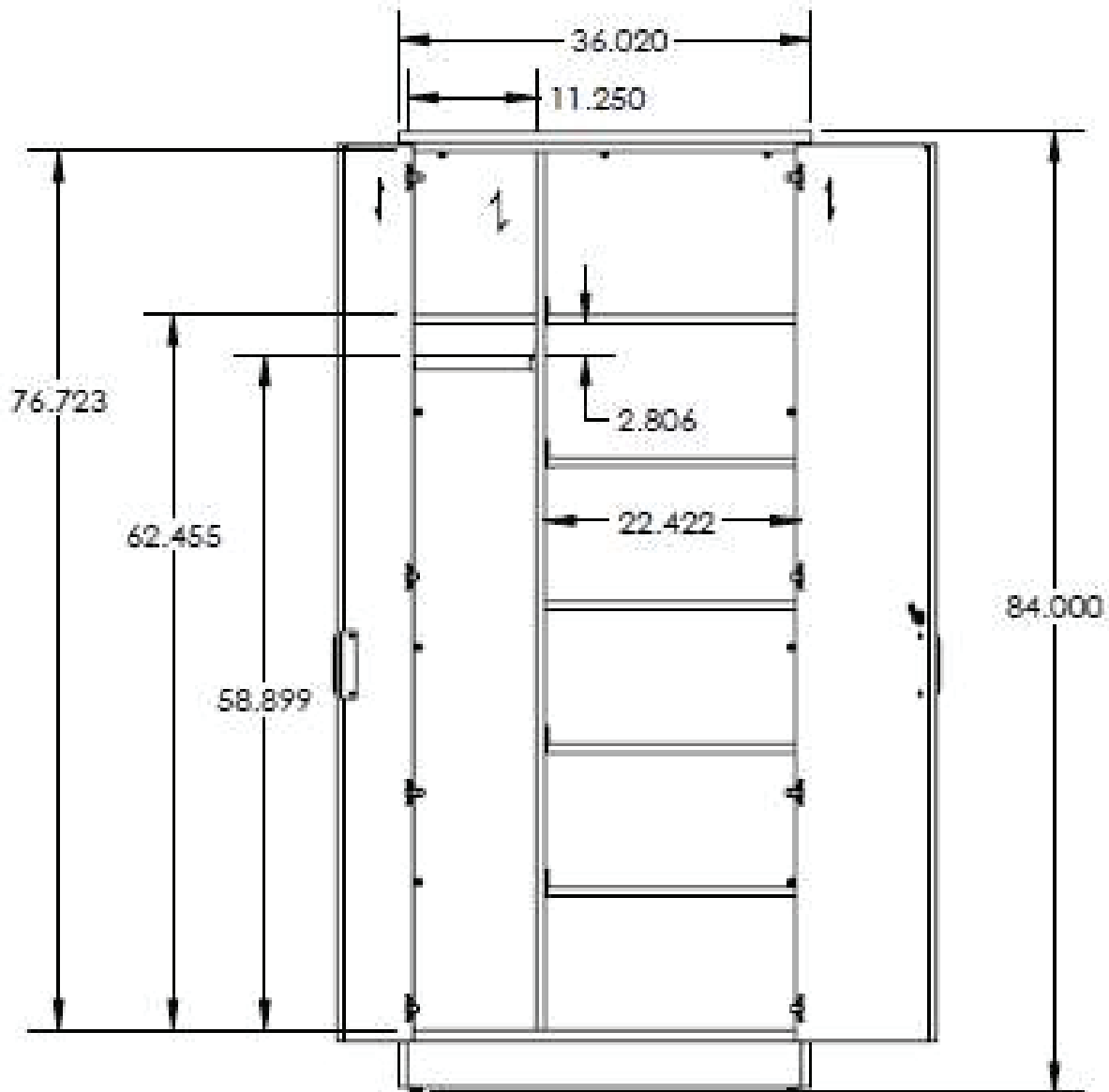
DIMENSIONS



GWC1362076LD
CABINET, SF, WRDRB, 36W X 76H, DR

ILLUSIONS 2.0

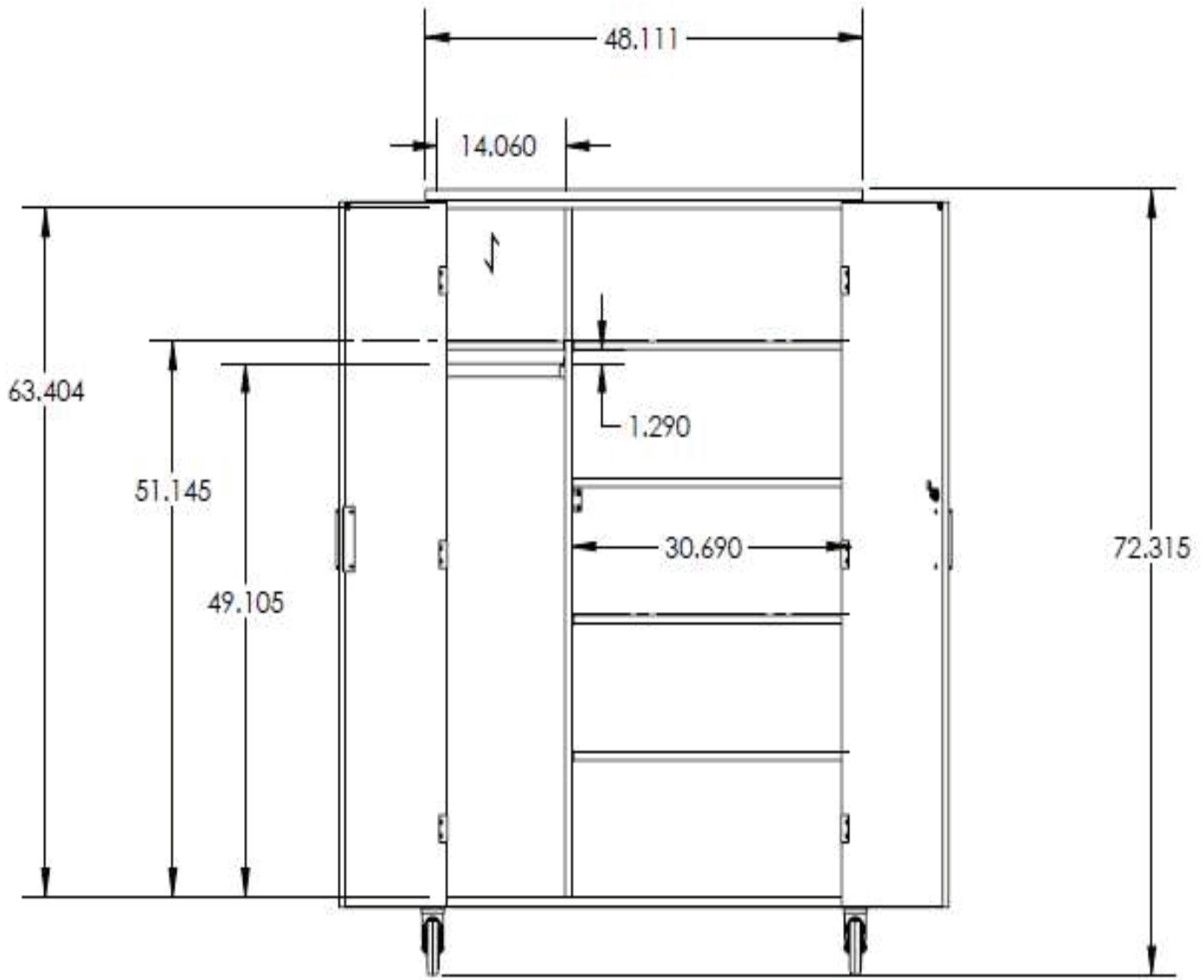
WARDROBE DIMENSIONS



GWC1362084LD
CABINET, SF, WRDRB, 36W X 84H, DR

SHEERLINE

WARDROBE DIMENSIONS



15.5019

CABINET, SF, WRDRB, 48W X 72H, URBAN